



# WB50

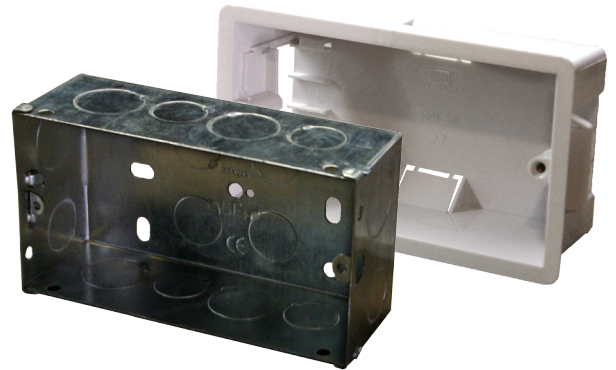
Wall panel installation box

## ► Features

- Flush mount installation box
- Compatible with DW5066, MWX65 and WP523 wall panels
- Plastic version for installation in hollow wall (/FG)
- Steel version for installation in solid wall (/FS)
- Fixing screws included

## ► Applications

- Residential buildings
- Industrial buildings
- Commercial buildings
- Conference rooms
- Offices, Hotels
- Restaurants, Bars



The WB50 series are installation boxes for AUDAC wall control panels such as DW5066, MWX65 and WP523. Two varieties for flush mount installation are available, offering a solution for wall type.

### WB50/FG

The WB50/FG allows wall panel installation into gypsum, wooden or other kinds of hollow walls with a plate thickness between 7 mm and 25 mm. An installation hole with dimensions 135 x 75 mm should be cut wherein the installation box should be placed.

### WB50/FS

The WB50/FS allows wall panel installation into brick, stone, concrete or any other type of solid wall. An installation hole with dimensions 135 x 75 mm should be cut wherein the installation box should be placed.

## ► Specifications

PRODUCT FEATURES		
WB50/FG	Material	ABS
	Dimensions	144.5 x 83.5 x 47.5 mm
	Internal depth	47 mm
	Plate clamping range	7 mm ~ 25 mm
	Cut-out dimensions	135 x 75 mm
WB50/FS	Material	Galvanised steel
	Dimensions	133 x 72 x 47 mm
	Internal depth	47 mm
	Cut-out dimensions	135 x 75 mm
SHIPPING & ORDERING		
Packaging	Cardboard box	
Shipping weight and volume (5pcs)	WB50/FG	0.0027 Cbm ~ 0.4 Kg
	WB50/FS	0.0027 Cbm ~ 1.3 Kg
*AUDAC reserves the right to change specifications without notice: this is part of our policy to continuously improve our products.		