

KRAMER



USER MANUAL

MODEL:

VIA Collage

Collaboration Hub

(For Firmware Version 2.0)



VIA COLLAGE QUICK START GUIDE

For Installer

This guide helps you install and use your product for the first time.

For more detailed information, go to www.True-Collaboration.com to download the latest manual or scan the QR code above.

STEP 1: Check What's in the Box

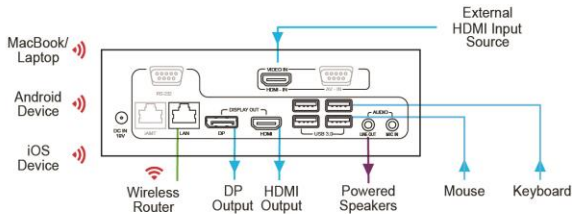
1. **VIA Collage** Collaboration Device
2. Power supply (19V DC) with power cords
3. Quick Start Guide
4. DP to HDMI Adapter

STEP 2: Install the VIA Collage

Place the **VIA Collage** on a table or mount in a rack with optional adapter RK-COLLAGE.

STEP 3: Inputs and Outputs at a Glance

Always switch off the power on each device before connecting it to your **VIA Collage**.



Always use Kramer high-performance cables for connecting AV equipment to the **VIA Collage**.

STEP 4: Connect the Unit

- Connect keyboard and mouse
- Connect your main display (dual displays are optional)
- Connect a Local Area Network (LAN) cable for connection to your network or use a router for connection to Wi-Fi
- Connect the power supply
- Turn on the device

STEP 5: Configure VIA Collage

Open the **VIA Collage** menu and click on Features, then on Settings.

Enter password: **supass**.

The Settings Menu tabs are:

- **LAN Settings** – Configure your network parameters and apply settings (DHCP is enabled by default)
- **System Controls** – Manage your display and audio settings, run control panel, select your language, etc.
- **Third Party Apps** – Install/remove third party software applications

After settings are defined, click on reboot button to apply all settings. For more details, read the Settings section in the user manual.



VIA COLLAGE QUICK START GUIDE

For User

STEP 1: Connect Your Device to the Proper Network

Connect your device to the same network used by Kramer **VIA Collage** in the specific meeting room (either Wi-Fi or LAN).

STEP 2: Run or Download the Application

MAC or PC

1. Navigate to the embedded Web page of **VIA Collage** by entering the Room Name of the VIA into your computer's browser.
2. Select **Run VIA** to execute the application only (intended for guests who will be using the VIA once) or select **Install VIA** to download the VIA application on your computer (intended for regular users of the VIA).



Welcome to VIA Collaboration Hub

Launch VIA to login and click Present to begin wireless presentation and collaboration

Run VIA

Install VIA

iOS /Android/Windows Phone

1. Download and install the free VIA App from Apple's App Store or Google's Play Store or Window Store. Use the QR code above.

STEP 3: Login

The screenshot shows a login window titled 'Welcome to VIA'. It contains two input fields: 'Room Name' with the value '00017' and a dropdown arrow, and 'Nick Name' with the value 'User'. Below these fields is a red 'Login' button.

Room Name: Copy the room name as appears in the wallpaper (IP Address).

Nickname: Enter a name for your device.

Code: Enter a 4-digit code as it appears in the wallpaper (if enabled).

Login: Press Login to join the meeting.

STEP 4: Main Menu



Click on **Present** to put your screen up front and on **Participants** to see who else is connected

STEP 5: Features



Wireless Connection

Connect wirelessly with your own device



Mobile Mirroring

Show any content from your iOS or Android device on the main display



Full HD Video Streaming

Share uninterrupted full HD wireless video streaming (up to 1080p60) and photos



Files

Drag and drop files to the Files folder to share instantly with other users



File Sharing

Share any size file with any number of participants



Whiteboard

Annotate, illustrate and edit shared documents: touch-screen compatible



Start Collaboration

Click to collaborate through a common display, using your own device. Multiple users can interact and control what's happening on the main display at the same time.



Enable Control

Give a participant control over a presenter's MAC® or PC laptop



Chat

Send an instant message to another participant



Third Party Apps

Join the meeting remotely with third-party apps, such as Microsoft Office®, Skype®, GotoMeeting®, Lync®, and WebEx®



4K-UHD Output



Web Browser

Open any browser to display content from a Web site



View Main Display

View the main screen on your own device.



HDMI Input 1

Connect any HDMI source (camera, DVD, Blu-ray™) and present it on the main display.

Contents

1	Introduction	3
1.1	Applications & Features	4
1.2	VIA Collage Controls and Connections	5
2	Setting Up VIA Collage	6
2.1	Connecting VIA Collage to a Display	7
2.2	Downloading and Running VIA Collage Software	8
2.3	Using an .msi File	11
2.4	Logging In to VIA Collage	11
2.5	Logging In to VIA Collage by QR Code Scanning	12
2.6	Logging to the VIA Collage Using a VIA Pad	13
2.7	Logging to the VIA Collage Using a VIA NFC Tag for Android	14
2.8	Using iOS / OS X / Android Mirroring to Share your Screen	15
3	VIA Collage Functions and What They Do	20
4	Using VIA Collage	24
4.1	VIA Collage User's Main Menu	24
4.2	Enabling Control	26
4.3	Chatting with Participants	27
4.4	File Transfer	28
4.5	Multimedia	30
4.6	View Main Display	35
4.7	Start Collaboration	36
4.8	Files (Cloud)	39
4.9	Whiteboard Collaboration	40
4.10	Whiteboard Functions	40
4.11	Showing Content from a Third Party Device	44
4.12	Picture-in-Picture	46
4.13	Calling with Skype	46
4.14	Using GoToMeeting	46
4.15	Using WebEx	47
4.16	Using Microsoft Lync	47
4.17	Accessing a Web Page	47
4.18	Settings Menu	48
4.19	User Experience	77
5	Technical Specifications	82
6	VIA Collage Upgrade Procedure	83
6.1	Downloading the Upgrade File	83
6.2	Upgrading your VIA Collage	83
6.3	Verifying a Correct Installation	83
6.4	Updating your Computer Client Applications (Windows and MAC)	83
6.5	Updating the Mobile Applications	84

Figures

Figure 1: VIA Collage Collaboration Hub	5
Figure 2: Connecting the VIA Collage Collaboration Hub	7
Figure 3: VIA Collage Admin Features	20
Figure 4: VIA Collage Main User Screen	22

Figure 5: The Participants' List	25
Figure 6: Enable Control	27
Figure 7: Chat Window	28
Figure 8: Admin File Sharing	29
Figure 9: User File Sharing	29
Figure 10: Shared Files on the Cloud	40
Figure 11: Whiteboard Toolbar	41
Figure 12: Wide Desktop	42
Figure 13: Multiple Screen	42
Figure 14: Screen Sharing	44
Figure 15: Showing a Third-Party Screen	45
Figure 16: Settings Screen	48
Figure 17: LAN Settings Screen	49
Figure 18: System Control Screen	50
Figure 19: Third Party Apps Screen	51
Figure 20: Setting Application Name	51
Figure 21: VIA Management - Network Settings	54
Figure 22: VIA Site Management	58
Figure 23: VIA Management – Authentication	66
Figure 24: Moderator Mode	67
Figure 25: Login Screen When Moderator Mode is Active	68
Figure 26: VIA Management – Gateway Features	72
Figure 27: VIA Management – Client Features	73
Figure 28: VIA Management – Client Features (Mobile)	74
Figure 29: Utilities - Gateway Activity Log	74
Figure 30: Utilities - Update Firmware	75
Figure 31: Samsung Galaxy (S6)	79
Figure 32: iPhone 6S+	80
Figure 33: PC/MAC	81

1 Introduction

Welcome to **VIA Collage**!

VIA Collage is Kramer's unique, powerful wireless presentation and collaboration hub. It converts any display at any location into an interactive meeting point, and it works with a wide range of presentation devices from desktop and notebook computers to tablets and smartphones.

Each participant in a **VIA Collage** session can quickly view, edit, annotate, comment, and share content with other participants. Participants can share their ideas through the primary screen, or break off with others into smaller groups during a meeting.

The **VIA Collage** integrates seamlessly with any organization's current IT infrastructure, converting any projector or screen into a networked device that users can share and view on their current devices. Every local connection to **VIA Collage** is wireless, free of dongles, cables, and other compatibility peripherals.

Key features of **VIA Collage**:

- Login using conventional Wi-Fi or LAN connections, no dongle needed
- Provides true HD 1080p/60 video streaming
- Supports Windows laptops, MAC® and Chromebooks, as well as iOS, Android and Windows mobile operating systems.
- Compatible with all common Web browsers
- Up to 255 users can be logged in simultaneously
- Up to 12 participant screens can be displayed simultaneously on dual screens (six on each screen).
- Supports popular third-party conferencing programs
- Touchscreen compatible with whiteboard and full annotation controls

1.1 Applications & Features

Present, share, chat, send and receive files, hold sidebar conversations, annotate, edit, and save copies of all your work, just as you would with a whiteboard or flip chart...except that you can do it all from your notebook computer, tablet, and smartphone.

Here are a few of the things you can do with **VIA Collage**:

Up to six different participant screens can be shown at the same time. **VIA Collage** automatically sizes each screen to the maximum available resolution, displaying tiles for two or more screens. Finished sharing? Tap Stop presenting to disconnect.

Chat and Share a file: Need to ask a meeting participant a question? Click their screen name and send them a text message with complete privacy. Windows and Mac PC users can also share files between themselves or the main presenter, all at the click of a mouse.

Control a participant's computer: Need to access files or play back a presentation from a participant's PC? Simply click Enable Control on the PC, and its cursor can be controlled remotely to launch programs and play media.

Multimedia: Sometimes it is just easier to explain your ideas with a video. Simply click the Multimedia tab on your device's screen and you can load and display JPEG images (all operating systems) and play MP4 videos (Windows and Mac PCs and iOS devices only). You can also display and share PDFs from any logged-in device. VIA Collage features a 10Mbps maximum video bitrate for 30fps or 60fps videos and handles video files of up to 8GB.

Are you using an iOS device with no VIA application? Just mirror your device's screen to the main display by activating the Airplay service of your device. Are you an Android user? Use the VIA App to start mirroring your device and its content!

1.2 VIA Collage Controls and Connections

This section defines **VIA Collage**.

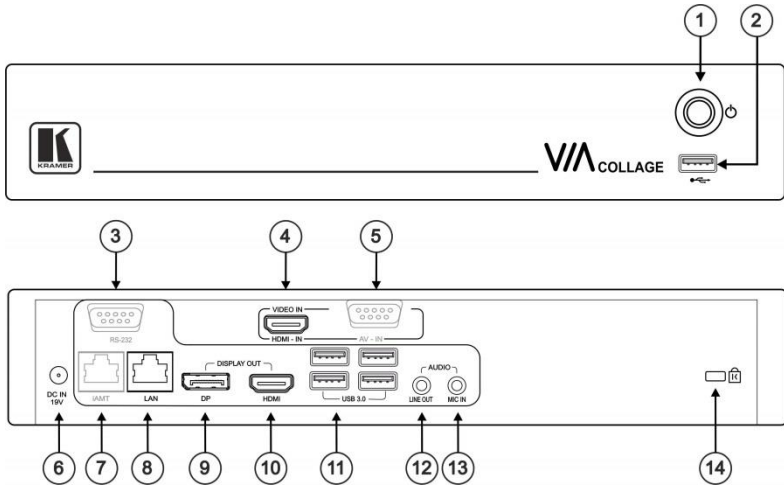


Figure 1: VIA Collage Collaboration Hub

#	Feature	Function
1	Power Button	For turning the machine on and off
2	USB Connector	For upgrading firmware or connecting a USB device
3	RS-232 Connector	Not in use
4	VIDEO IN HDMI-IN Connector	Connects to an HDMI source
5	AV – IN RS-232 Connector	Not in use
6	DC IN 19V Connector	Connects to the 19V DC power supply
7	iAMT RJ-45 Connector	Not in use
8	LAN RJ-45 Connector	Connects to a wireless router
9	DISPLAY OUT DP Connector	Connects to a DisplayPort display
10	DISPLAY OUT HDMI Connector	Connects to an HDMI display
11	USB 3.0 Connectors	Connect to up to four USB devices
12	AUDIO LINE OUT 3.5mm Mini Jack	Connects to an unbalanced stereo audio acceptor
13	MIC IN 3.5mm Mini Jack	Connects to a microphone
14	Lock Opening	Connects to a security locking cable

2 Setting Up VIA Collage



Always switch off the power to each device before connecting it to your **VIA Collage**. After connecting **VIA Collage**, connect its power and then switch on the power to each device.

To connect the **VIA Collage** as illustrated in the example in [Figure 2](#) you need:

- A **VIA Collage** Wireless Collaboration Hub
- A display (projector, monitor, or screen).
NOTE: A touchscreen display is best for annotation
- A Local Area Network (LAN) cable for connection to your network. For wireless network connectivity, use a commercial wireless router

The following client devices can be used with Kramer's **VIA** collaboration hub:

- A Windows 7/8/10® (32-bit/64-bit) computer.
- A Macintosh® computer, using OSX 10.7.x or newer.
- An iPad/iPhone® tablet/smartphone with the **VIA** app installed (iPad 2 or later, iOS 8 or later).
NOTE: When using the Airplay service, no application is needed (see [Section 2.8](#)). However, we recommend running iOS9 or El Capitan OS X for a better experience.
- An Android® OS 4.4 Tablet/Smartphone with the **VIA** app installed
NOTE: For using the Android mirroring feature, a device equipped with Android 5.1 minimum is required.
- A Windows® phone with the **VIA** app installed.

These optional add-ons can enhance your **VIA Collage** system:

- A USB or HDMI camera for distant participants connecting through Lync®, Skype®, GoToMeeting®, WebEx®
- A conferencing speakerphone for remote communication as well as audio playback of content being shared on the display
- A Kramer DIP-30, 4K UHD automatic switcher for HDMI, VGA, Ethernet, data and unbalanced audio signals can also be used to expand the number of local video sources through the VIA Collage HDMI input.

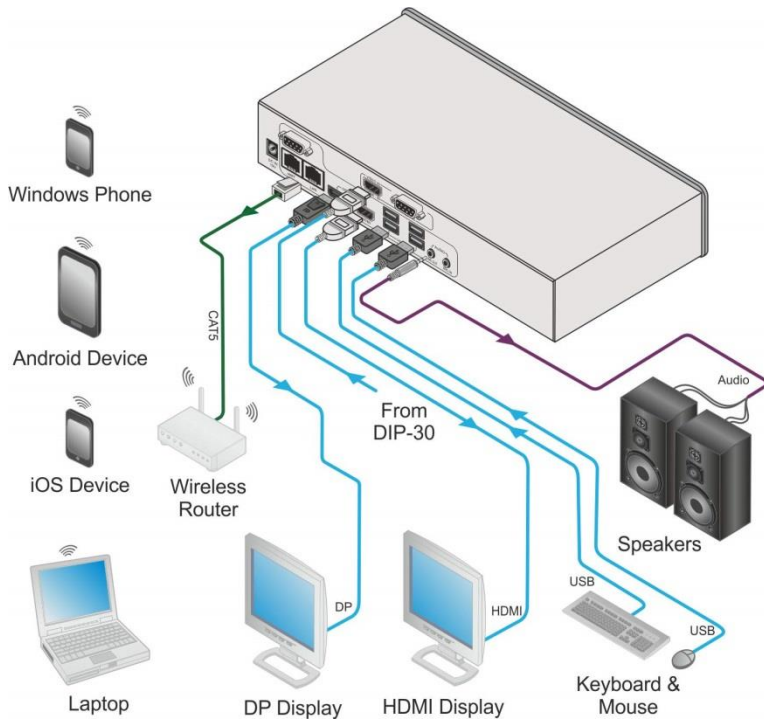


Figure 2: Connecting the **VIA Collage** Collaboration Hub

2.1 Connecting VIA Collage to a Display

VIA Collage is equipped with dual display output connections.

- The HDMI connection can be used with any compatible projection or direct-view display, such as an LCD monitor. This connection carries embedded audio, and can also be routed and switched just like any other HDMI connection
- The DisplayPort connection can be used with compatible projection or direct-view displays. Unlike the HDMI port, the DisplayPort jack does not carry embedded audio and requires a separate audio connection

VIA Collage's internal video card reads the Extended Display Identification Data (EDID) for any connected display and sets the optimum display resolution and image refresh rate automatically through the HDMI and DisplayPort jacks.

For full functionality, **VIA Collage** must be connected to a local area network (LAN). You must assign an IP address to the **VIA Collage**.

NOTE: To allow participation in a collaborative session (send and receive content), connect the **VIA Collage** hub and all participant devices (PCs/ MACs/ smartphones/tablets) to the same network (LAN - wired/wireless).

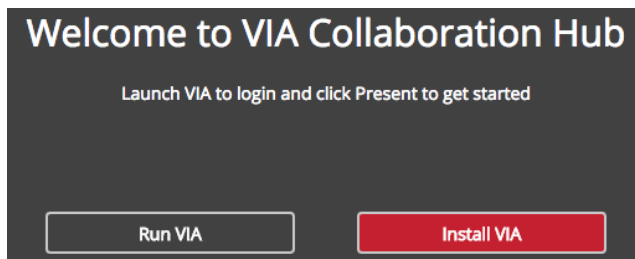
The **VIA Collage** hub receives user's display/screen information and multimedia files from their device (laptop/tablet/smartphone) and sends them to the collaboration display (the display connected directly to **VIA Collage** hub unit).

2.2 Downloading and Running VIA Collage Software

All participants in a meeting must download and run either the Kramer **VIA** executable file (PC, Mac) or the appropriate Chrome, Android, iOS or Windows Phone app.

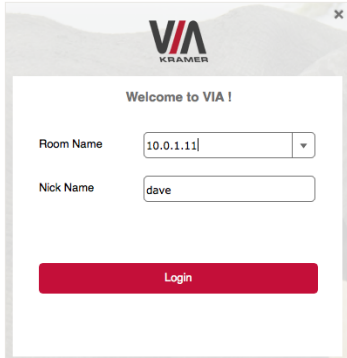
To access the PC and Mac executable files:

1. Open your Web browser and enter the IP address for your **VIA Collage** unit
Your Web browser recognizes your OS (Mac/Windows) and directs you to the correct client software
2. Choose from the following two options:



3. To run the VIA app virtually (without installing on your computer), select "Click to **Run VIA**". Once downloaded, locate the file on your computer (under "Downloads") and click to launch it. The **VIA Collage** login screen appears


4. To permanently install the VIA app, select “Click to **Install VIA**”. It downloads an .exe file to your computer and asks if you want to run this file. Click **Yes** and follow the Setup instructions. The VIA app is saved to the KRAMER folder on your C: drive. It creates a shortcut on the desktop for easy access.



For tablets and smartphones, find the Kramer **VIA** app in the App Store (iOS), Google Play (Android) and Windows Store (Windows phone).

Alternatively, you can open your Web browser on your mobile device and enter the IP address for your **VIA Collage** unit and then choose to install the VIA application.

Download the app to your tablet/phone and install. When the app is run, the following screen appears:




Welcome to VIA !

Room Name

Nick Name

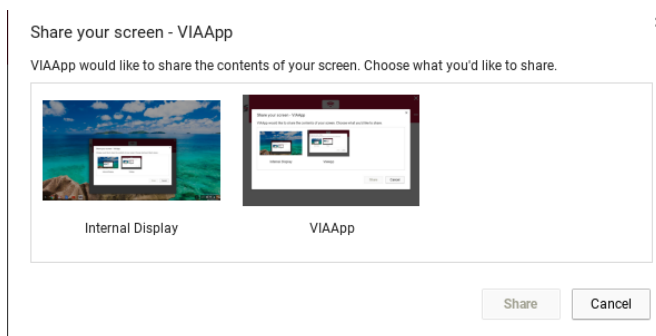
Code

Your WiFi Connection Name: VIA-Meeting-Room



VIA Collage enables wireless presentation from Google Chromebooks or any computer running the Google Chrome browser. The Chrome App is available on the Chrome Web Store.

After installing the Chrome App, the connection process is identical to its Mac and Windows counterparts: Enter the Room Name and Room Code in the application to connect to VIA. The Chrome App enables presenting either the entire desktop or an individual application window:



Note: To connect to the VIA Gateway, an internet connection is required on both the VIA Collage and Chromebook. The Chromebook app currently does not support DNS names, audio, or collaboration features and can only be used for presentation. The VIA IP address must be used for the connection.

2.3 Using an .msi File

IT managers can use the VIA .msi file for easy deployment and installation of the VIA application on the user's clients.

To find the .msi file:

1. Browse your unit for (make sure you are on the same network):
http://<ip of box>/files/VIAApp.msi.
2. Replace "<ip of box>" by the valid Room Name.
3. Save the file on your PC.

2.4 Logging In to VIA Collage

Windows, Mac OS and Chromebook

- Choose a username (nickname) for your device (any mix of English letters and numbers) then enter it on the login screen
- Next, enter the room code (if activated), seen on the lower right part of the screen. This lets you access **VIA Collage**

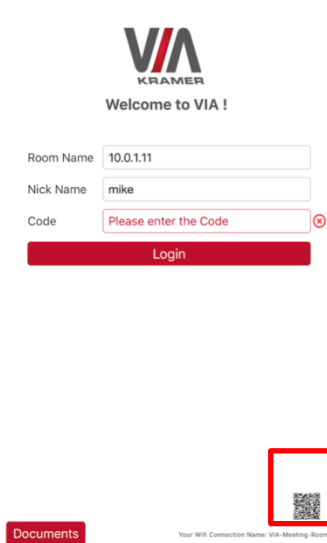
iOS, Android & Windows phone

- First, enter the IP address for the **VIA Collage**. This is found on the main display screen in the lower left
- Next, choose a username (nickname) for your device (it can be any mix of English letters and numbers) then enter it on the login screen of your device
- Finally, enter the room code as seen on the lower right part of the screen. This lets you access **VIA Collage**. Now, you're ready to go!

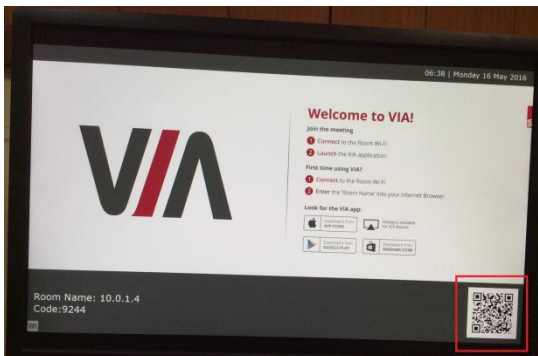
2.5 Logging In to VIA Collage by QR Code Scanning

iOS, Android & Windows Phone

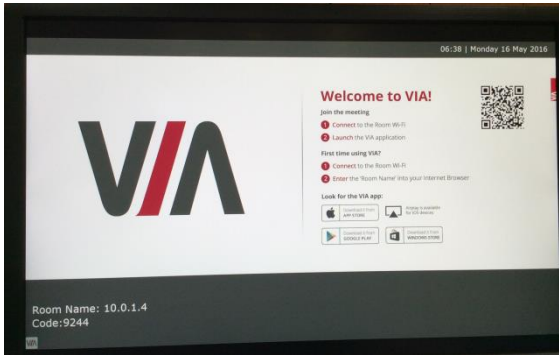
1. Launch the application on your mobile device and click the QR code icon (on the lower right corner).



2. Put your mobile device in front of the VIA main display QR code (found on the VIA main display screen in the lower right corner).



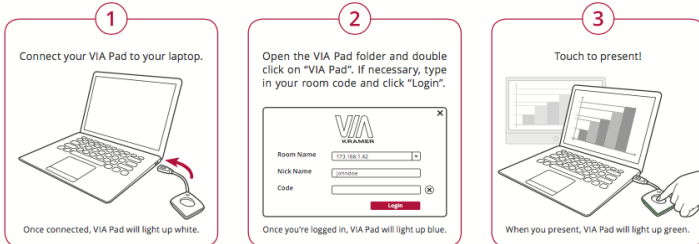
- You are automatically logged in to **VIA Collage**.



2.6 Logging to the VIA Collage Using a VIA Pad

Windows and Mac OS

- Press once: Presents your screen on the main display (when you start, the LED banner on the device is blue. After you stop presenting, it changes to green)

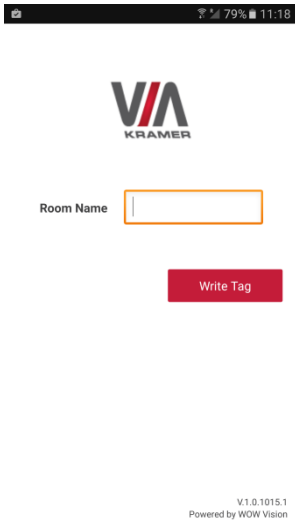


- Press twice: Freezes your screen (the banner on the device changes from green to flashing green). To unfreeze and resume, press twice again
- Press once again: Stops presenting
- Long press: Displays on the full screen when you are not the only one who is already presenting

2.7 Logging to the VIA Collage Using a VIA NFC Tag for Android

To write an NFC tag:

1. Install the VIA NFC Writer on an Android device. Download the .apk file freely from the Kramer website:
<http://www.kramerelectronics.co.il/support/download.asp?f=50898&pname=via%20nfc%20writer>



2. Open VIA NFC Writer
A page similar to a VIA page opens:
3. Enter the room name and click **Write tag**
4. When prompted, touch the Android device on the writable tag.
Another prompt confirms that the tag has been successfully written

To use the NFC tag:

- Enable the NFC feature on an Android device
- Touch the Android device on the tag:

- IF VIA is installed – The VIA application launches and automatically logs into VIA Collage. The room code is bypassed
- IF VIA is in the background – Same as above
- IF VIA is not installed – The Google play store page is launched with a VIA application download option. Install the VIA Android application
- If VIA installed and connected – A prompt asks the user to log out before touching the tag with an Android device

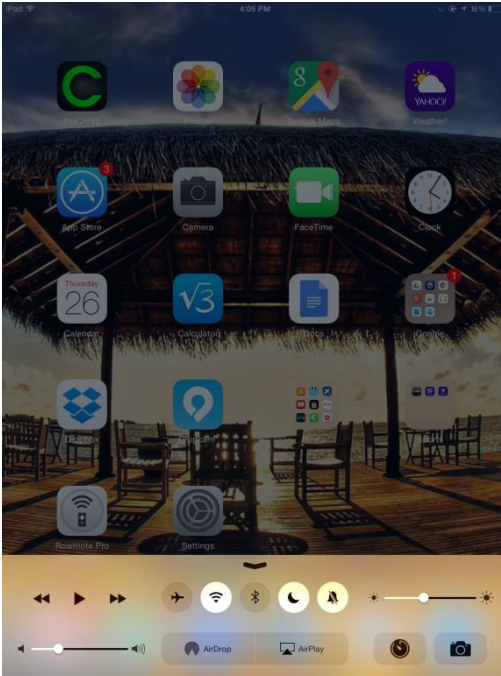
2.8 Using iOS / OS X / Android Mirroring to Share your Screen

All participants in a meeting using an Apple device can mirror their screen by using the Airplay service. No application is required to activate this mode. However, the **VIA Collage** unit must run firmware version 1.9 or later and iOS mirroring feature must be enabled (see the “settings” section for more details).

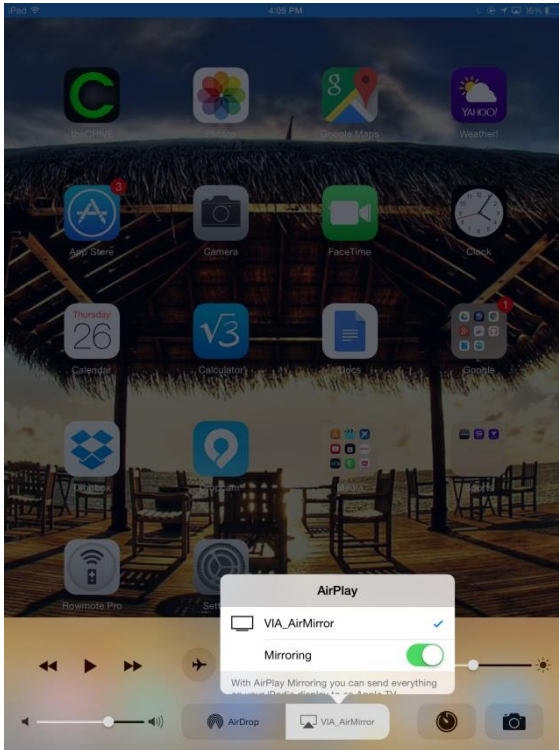
2.8.1 From your iOS Device (iPhone or iPad/Mini iPad)

Check that your device is running iOS8 version as a minimum requirement to support this feature. iOS9 is recommended.

1. Connect your Apple device to the network where the **VIA Collage** resides.
2. Swipe up from the bottom of the iPad or iPhone to reveal the Control Center.



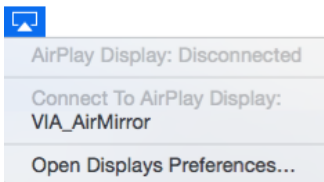
3. Click AirPlay and choose the **VIA Collage**'s AirPlay device name. By default the VIA's AirPlay device is named VIA_AirMirror_XXXX, where XXXX is a random combination of letters and numbers.
4. To stop mirroring, disconnect the device properly by as follows:
Swipe up from the bottom and swipe the toggle button to disconnect mirroring then tap to select "iPhone/iPad" accordingly.
Note: If the room code is enabled on the **VIA Collage**, you are prompted to enter the same 4-digit security code when attempting to mirror your iOS device. This code appears on the main screen of the **VIA Collage**.



2.8.2 MacBooks and Apple Computers

Check that your Mac is running OS X 10.10 version as a minimum requirement to support this feature (Yosemite). El Capitan is recommended.

1. Connect your Apple device to the network where the **VIA Collage** resides.
2. Click the AirPlay menu on the Apple Menu Bar, located in the top-right corner of the screen near the clock.



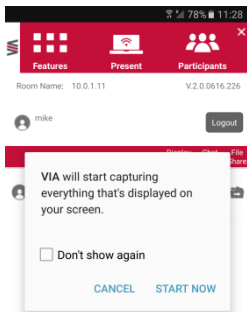
3. Choose the AirPlay device name of the **VIA Collage**.

By default, the VIA's AirPlay device is named VIA_AirMirror_XXXX, where XXXX is a random combination of letters and numbers.

Note: If the Room Code is enabled on the **VIA Collage**, you are prompted to enter the same 4-digit security code when attempting to mirror your iOS device. This code appears on the main screen of the **VIA Collage**.

2.8.3 Android Device Mirroring

1. Your device must support Android 5.1 version as a minimum.
2. Make sure the VIA application is installed on your device. See [Section 2.2](#) for details.
3. Connect your Android device to the network where the **VIA Collage** resides.
4. Log in to the application by entering the Room Name and Nickname fields (+ room code if enabled).



5. Click Present. The device shows this message: "VIA will start capturing everything that's displayed on your screen." Accept by clicking on "START NOW".
6. You can now minimize the VIA app by clicking on the "Home" button of your device. Your screen is mirrored on the main display.

7. To stop sharing your screen, re-open the VIA application and click **Stop presenting**.

Note: Android mirroring does not support audio. Audio is heard from your device and not from the output of the VIA device.

3 VIA Collage Functions and What They Do

VIA Collage presents two types of screens depending whether it is being used by the Admin or by a User. The following screen shots illustrate both types.

The illustration below shows the VIA Collage main Admin screen and its functions:



Figure 3: VIA Collage Admin Features

Item	Icon	Action
1	Features	Allows user to see and access all available features of VIA Collage
2	Whiteboard	Opens a canvas to annotate, draw, and update document collaboratively over a live stream
3	Participants	Provides a list of all participants in the session
4	Cloud	Open the Cloud and all the files that are saved or shared between participants
5	Web Browsing	Opens the browser at the VIA Collage gateway to present any content directly from the Web site
6	Screen Share	Pushes a mirror of the VIA Collage collaboration display on the user's devices (laptop, iPad, MacBook, Android tablet). The user can see all the activities of the VIA Collage collaboration display on his system (this feature is called "View Main Display" in the Client menu)
7	Third Party Apps	Shows third-party applications installed and integrated with VIA Collage
8	File Transfer	Shares files between the available participants during the session
9	Chat	Allows sending chat messages among available participants during that session
10	HDMI Input	Displays/hides the external video source connected to the VIA Collage input
11	Picture in Picture	Switches the external video source (HDMI input) between PIP (Picture-in-Picture) mode and full screen mode
12	Display Layout	Allows selecting the layout when several participants are stepped-in (thumbnail view or dynamic view)
13	Settings	Performs settings on the LAN, configurations related to third-party apps and system control
14	Reboot	Reboots the VIA Collage System
15	Shut Down	Shuts down the VIA Collage system

The following illustration shows the **VIA Collage** main User screen and its functions:

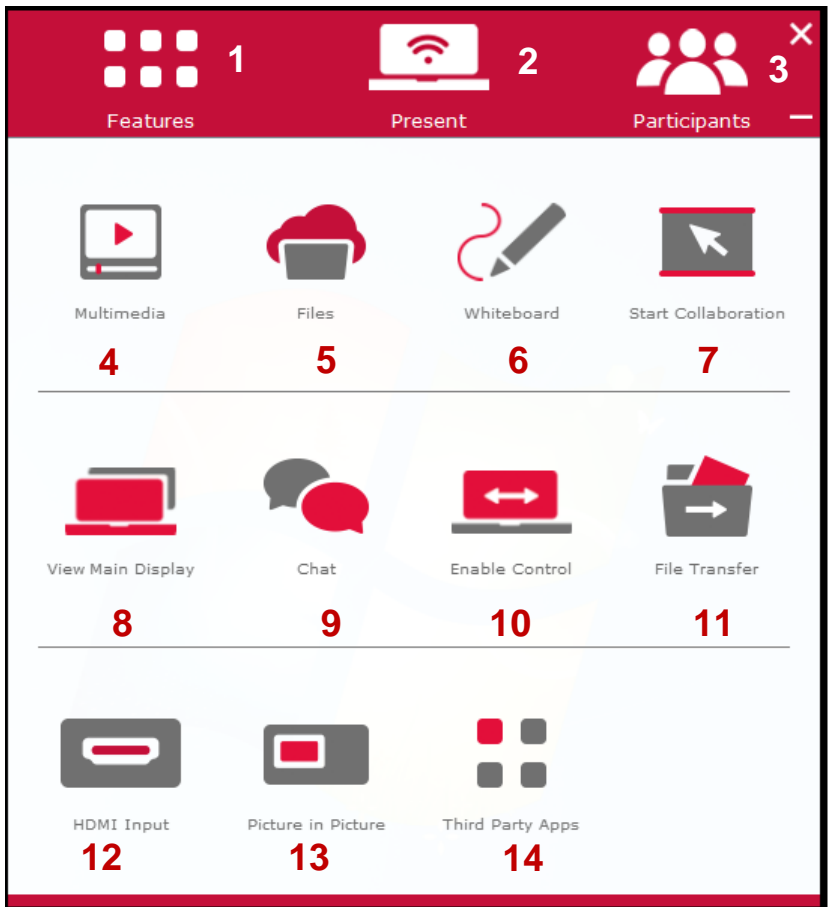


Figure 4: **VIA Collage** Main User Screen

Item	Icon	Action
1	Features	Allows user to see and access all available features of VIA Collage
2	Present	Allows the user to show his device's screen on main display, or to stop presenting once activated
3	Participants	Provides a list of all participants in the session
4	Multimedia	Supports video formats: avi, vob, mp4, mov, mpx (ex. mpg). Shares smooth full-motion video (up to 1080p/60) and photos
5	Files	Drag and drop files to the cloud to share instantly with everyone in the session
6	Whiteboard	Opens a canvas to annotate, draw, and update document collaboratively over a live stream
7	Start Collaboration	Click to collaborate through a common display using your own device. Multiple users can interact and control the main display at the same time
8	View Main Display	Shows a mirror of the VIA Collage collaboration display on the user's devices (laptop, iPad, MacBook, Android tablet). The user can see all the activities of the VIA Collage collaboration display on his system (this feature is called "Screen Share" in the Admin menu)
9	Chat	Allows sending chat messages among available participants during that session
10	Enable Control	Gives participants control over the presenters Mac or PC laptop
11	File Transfer	Shares files between the available participants during the session
12	HDMI Input	Displays/hides external video source connected to the VIA Collage input
13	Picture in Picture	Switches the external video source (HDMI input) between PIP (Picture-in-Picture) mode and full screen mode
14	Third Party Apps	Shows third-party applications installed and integrated with VIA Collage

4 Using VIA Collage

VIA Collage is a powerful and versatile collaboration hub that gives participants a wide selection of presentation tools. In this section, we'll look at each of those tools and discuss briefly how it works.

4.1 VIA Collage User's Main Menu

This section refers to the user's experience. Once you have logged in to VIA, the Parent Dashboard displays on your home-screen. This Parent Dashboard provides basic navigation through VIA. The Parent Dashboard displays your main navigation icons, "Features", "Present" and "Participants". Each one of these three icons represents the core functionality of VIA. The section below identifies and defines each icon.

- Clicking the Features tab on the main menu allows the user to see and access all available functions of **VIA Collage**
- Clicking the Present tab on the main menu displays your PC/device screen on the main screen. After selecting the icon, the "Present" button automatically changes its displayed name to "Stop Presenting." Once you have finished sharing/displaying your content, you select "Stop Presenting" to remove your desired content from the display
- Clicking the Participant List tab reveals a list of all participants in the session. It also opens the capability for "Chat" and "File-Sharing" functionality with the other participants

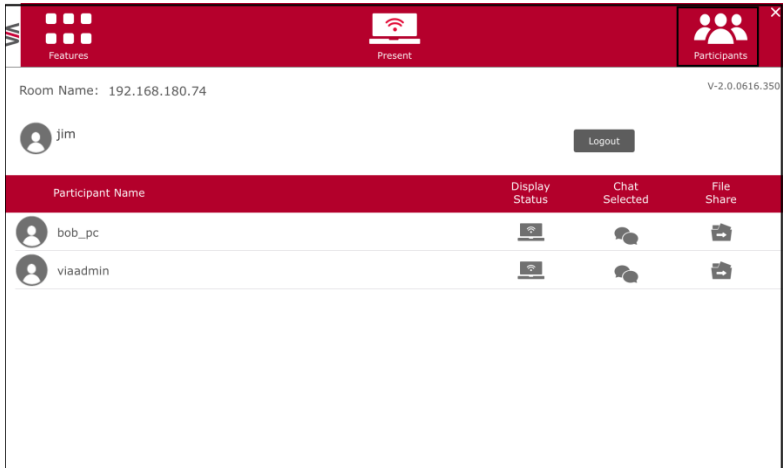










Figure 5: The Participants' List

Under Participants, the following icons are used:

Item	Icon	Meaning
Display Status		Start a presentation at a display
		The user is currently presenting
Chat Status		Start a chat session with any available participants
		The participant is currently chatting with you. Click to open the chat session

Item	Icon	Meaning
File Transfer		Start a file transfer with another participant
		File transfer is already active with that participant
Enable Control		Take control of any user while the user is displaying
		Admin has the control of that user

4.2 Enabling Control

This function allows the admin to take control of a participant's PC (Windows or Mac OS). (In our example, [Figure 6](#), user *Dave* has stepped in and the Admin has taken control of *Dave*):

The admin can work on *Dave's* system as he has taken control. (Admin can play media or work on a document or presentation file collaboratively with *Dave*).

Any other participant who wants to take control or collaborate with *Dave's* system can click the Start Collaboration icon and drag his laptop mouse to the top and off their local screen. That cursor now moves to the **VIA Collage** unit and appears on the main display of *Dave*. Buttons are shown in the picture below:

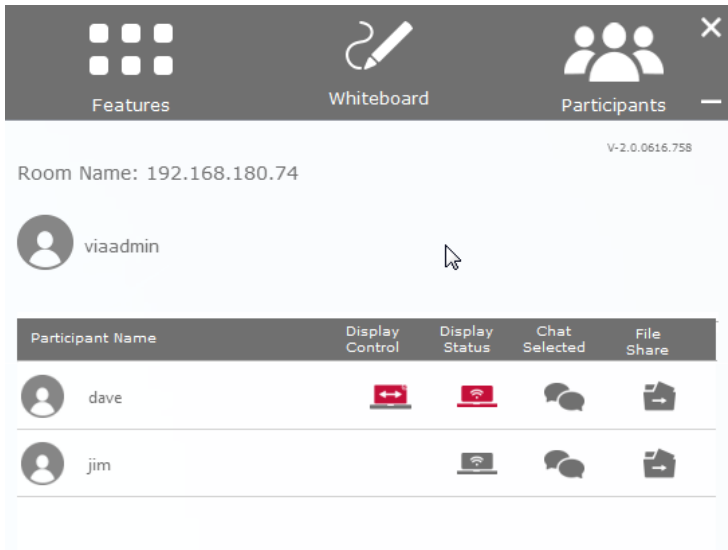



Figure 6: Enable Control

4.3 Chatting with Participants

The admin or user can start a chat session to exchange text messages between users.

To initiate a chat session:

- Go to the participant list and click the chat icon  for the desired participant. The chat window opens and you can chat with selected participant:

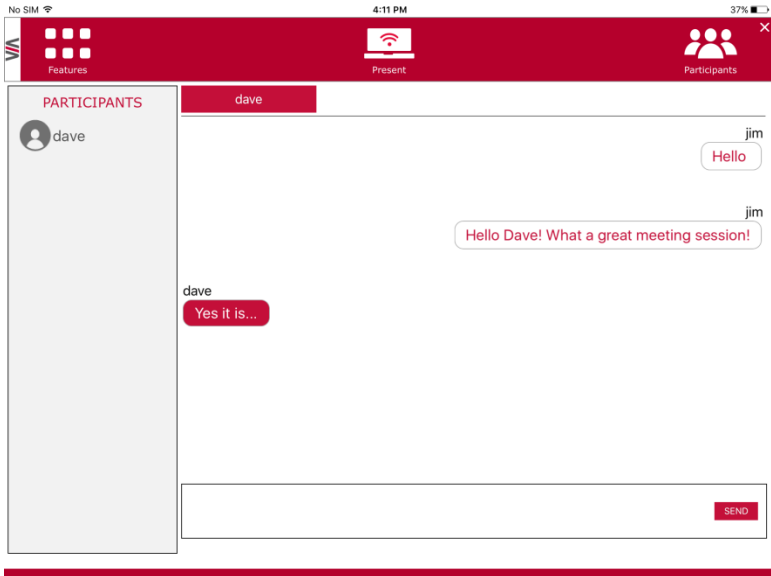


Figure 7: Chat Window



In the chat window, the participant's name is at the left side of the window and your chat messages are on the right side.

The user can check for active chat sessions by going to *Features > Chat* 

4.4 File Transfer

VIA Collage can transfer files between PC/Mac logged in users.

To share a file:

- Go to the participant list and click the file share icon  for the desired participant with whom you wish to share a file.
- In the cloud directory, select the desired file on your device. Then, click Share 

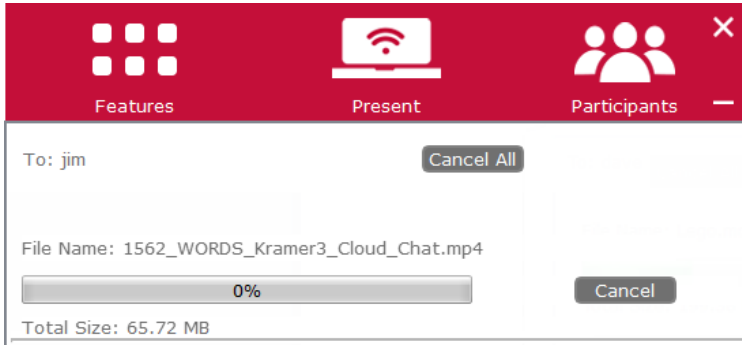


Figure 8: Admin File Sharing

The target participant selects a location to save the file and start the file transfer process. Once completed, the file is saved on that participant's system.

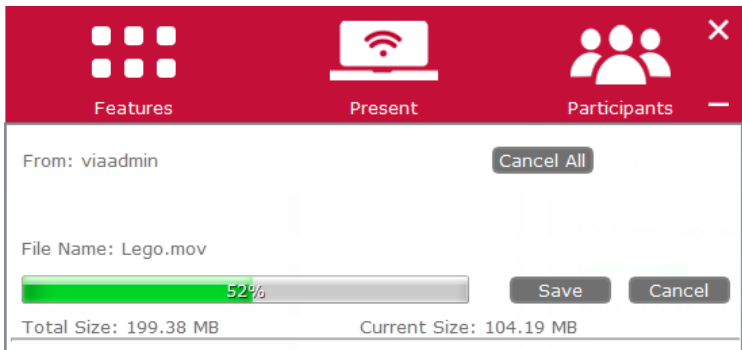



Figure 9: User File Sharing

When completed, the file is saved at receiver's system.

You can check or cancel currently sharing file from *Features > File Transfer*. 

4.5 Multimedia

This section explains the various forms of handling multimedia.

4.5.1 Video Player

VIA offers users the ability to play video at a full HD 1080p/60fps rate. Full 1080p/60fps video is obtained by streaming the video from the VIA Client application to the VIA Gateway. The video file never leaves the user's client device and is not transferred to VIA.

Below are the two ways you can play video from VIA:

File Searching Media Files

1. Select "Multimedia" from your features menu on the parent dashboard
2. Click Add Media in the lower left corner
3. Select a video you would like to add and click "Open"
4. The file is then displayed within the "My Media" section
5. Double-click the media file and the video begins playing

Drag/Drop Media directly to VIA

1. On the left-hand side of the VIA parent dashboard you see a small VIA logo
2. Select the file you want to play from any folder on your device
3. Drag the file to the logo only. The video does not play if you try to drag the file to the left, right, below or above the logo
4. Once released, the video automatically starts playing

Note: When showing videos through VIA, the video is not being transferred from your device to the VIA unit. All videos are being encoded directly on your BYOD device through the VIA software and then streamed from your device to the VIA unit. The VIA unit then decodes the streamed file for playback.

Note: Without using the VIA software, media files can be played from your device using native media players you have installed such as QuickTime and/or Windows Media Player. However, if you choose this method and do not use VIA for video playback, your

video is only mirrored to the display. Using this method, you may experience lower frame rates, inconsistent playback and increased latency, depending on your laptop system performances.

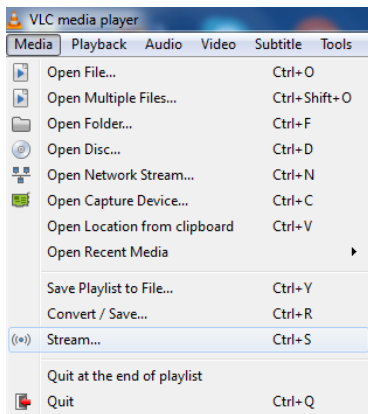
4.5.2 RTSP Streaming Through VLC

The Real Time Streaming Protocol (RTSP) is a network control protocol designed for use in entertainment and communications systems to control streaming media servers. The protocol establishes and controls media sessions between end points. Clients of media servers issue commands like play and pause, to facilitate real-time control of playback of media files from the server.

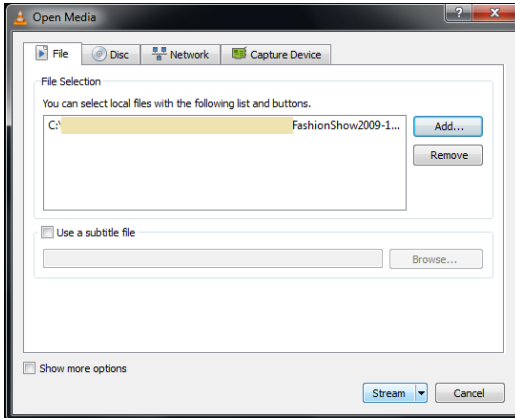
VIA Collage supports RTSP. A media being played locally on a computer can be streamed on a **VIA Collage** unit, provided the computer and the **VIA Collage** unit are on connected networks.

For RTSP Streaming using VLC:

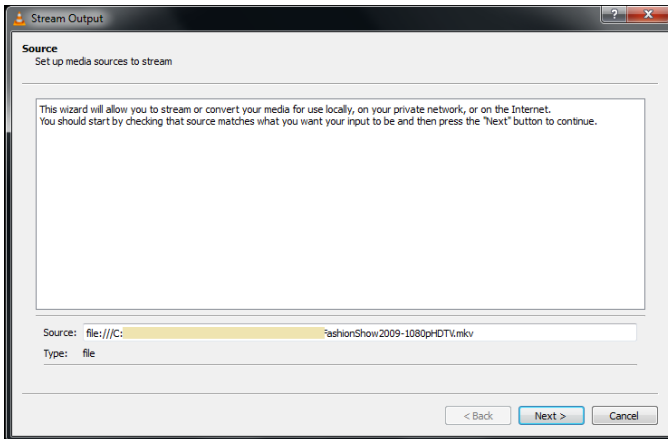
1. Open VLC.
2. Click **Media > Stream**



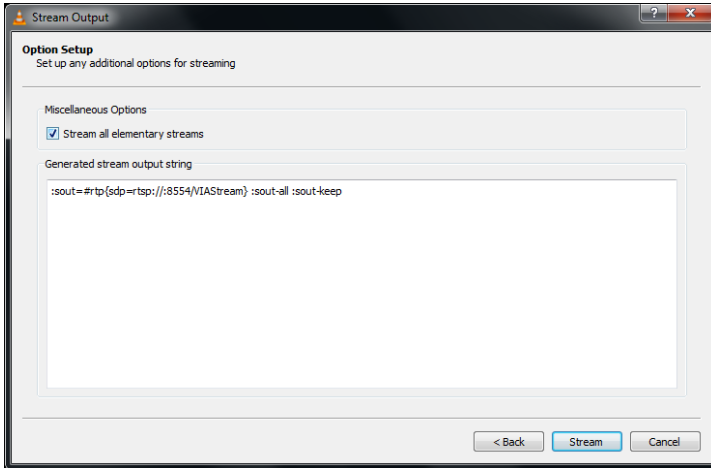
3. Click **Add** and select a file to stream and click **Stream**.



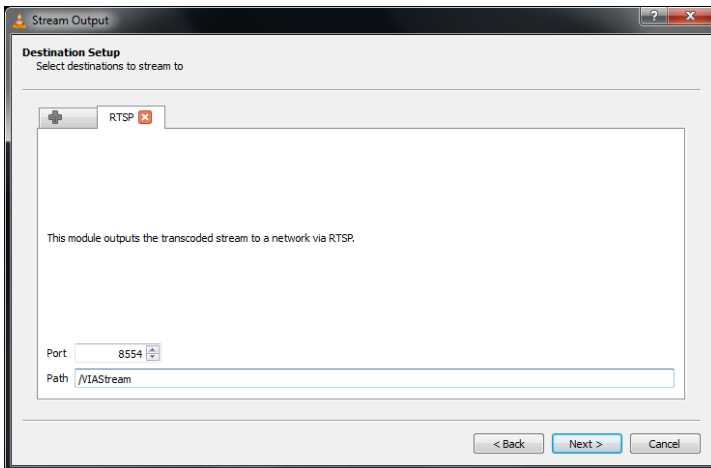
4. Click **Next** on the next screen.



5. Choose RTSP from the **New Destination** drop down and click **Add**.
6. Enter a short name to be used as **Path**, uncheck **Activate Transcoding** and click **Next**.



7. Check **Stream all elementary streams** and click **Stream**.

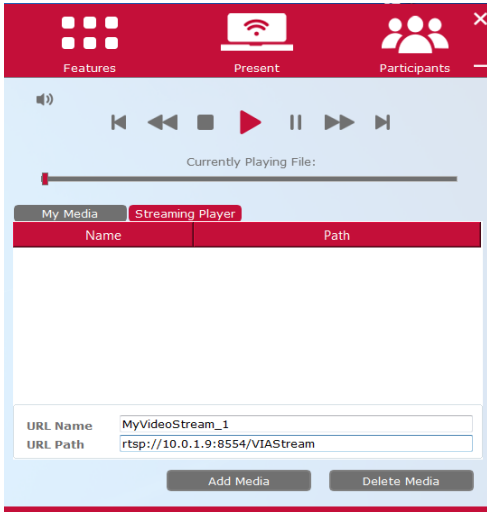


8. Open VIA Collage client and click **Features > Multimedia > Streaming Player**.

9. Type a name as the URL name.

10. The URL takes the path from:

rtsp://<local computer IP address>:8554/<name mentioned in step 6



11. Click **Add Media**.
12. Select RTSP stream and click the play button to stream this media on **VIA Collage**.

4.5.3 RTP Streaming Through VLC

The Real-time Transport Protocol (RTP) is a network protocol for delivering audio and video over IP networks. RTP is used extensively in communication and entertainment systems that involve streaming media, such as telephony, video teleconference applications, television services and Web-based push-to-talk features.

VIA Collage supports RTP. A media can stream on a **VIA Collage** unit, provided the computer and the **VIA Collage** unit are on connected networks.

For RTP Streaming using VLC:

1. Open VLC.
2. Click **Media > Stream**.
3. Click **Add** and select a file to stream and click **Stream**.

4. Click **Next** on the next screen.
5. Choose **RTP/MPEG Transport Stream** from the **New Destination** drop down and click **Add**.
6. Enter **VIA Collage** unit's IP address and click **Stream**.
7. Open **VIA Collage** client and click **Features > Multimedia > Streaming Player**.
8. Type a name as the URL name.
9. The URL path takes the form:
Rtp://<VIA Collage IP address>:5004
10. Click **Add Media**.
11. Select the RTSP stream and click the play button to stream this media on **VIA Collage**.
Note: if a URL is already present in the streaming list above, VIA client generates a warning for both modes – RTP and RTSP.

4.6 View Main Display

By selecting View Main Display, a live view of the main screen is displayed on the user's device to allow a closer look at the presentation.

Note: View Main Display is designed for visual reinforcement and is shown at a reduced frame rate in an effort to reduce bandwidth usage. It is not intended for watching full motion video, as the playback on the client device appears choppy.

To use View Main Display:

- Select the View Main Display icon from the Features menu on the Parent Dashboard
The screen automatically shows a live representation of the main display
- Zoom in/out of the captured image
 - Pinch to zoom in on tablets and smartphones
 - +/- Percentage zooming on PCs & Macs
- Use basic whiteboarding functionality on the bottom (mobiles) or the left

(laptops) of the screen to:

- Draw, erase, add notes and save the file
- Choose various color options
- Create annotations that allow the user to take notes locally on their device without affecting the presentation
- To exit View Main Display, select the Features icon from the Parent Dashboard

Note: Saved image captures are available under the Multimedia section of the Parent Dashboard under “Documents.”

4.7 Start Collaboration

VIA Collage offers state-of-the-art collaboration functionality. VIA allows up to 255 meeting participants to collaborate. The Start Collaboration function allows a user to use their mouse and keyboard on VIA gateway.

Note: In the description below, we describe a scenario with only two users for simplicity.

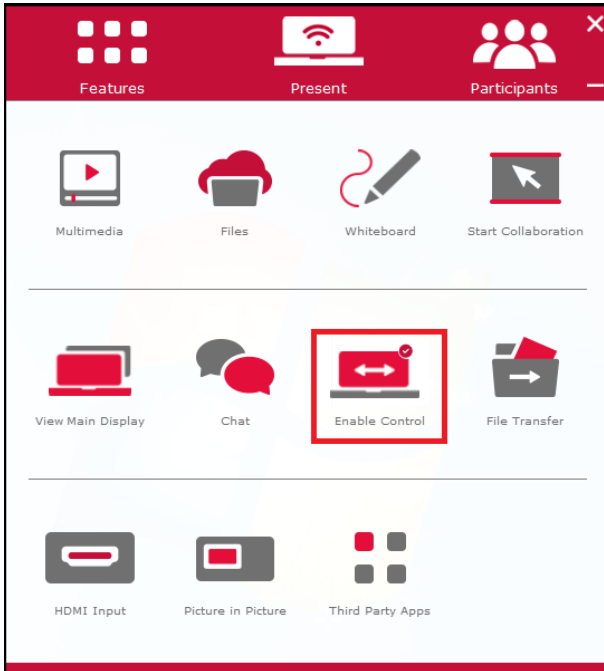
User #1 is showing content from their device

User #2 is collaborating with User #1’s content

- Collaboration begins when User #1 Steps-In and begins displaying content
- With content being shown, User #1 then selects Enable Control from the dashboard. At this point, all connected users have full control of User #1’s computer

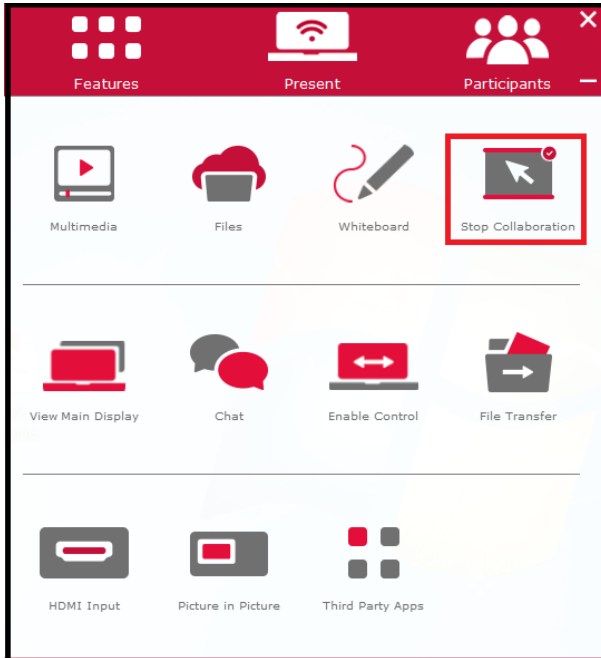
“Enable Control” is the function that can be electively enabled to allow other users to share control of their computer

- Once “Enable Control” is selected, a red check mark appears on the upper-right of the icon



Note: To disable this functionality once the collaborative session has ended, select the same Enable Control icon and the red button disappears. Once deselected, no other participants have access to that computer.

- User #2, who can now see User #1's content, selects the Start Collaboration button



- User #2 can bring their mouse onto the main display by moving their mouse to the top of their local screen (as if VIA's main display was an extended desktop)
 - Once User #2 has scrolled up, an additional cursor with User #2's name on it appears on the screen
 - Each participant nickname is displayed with a custom colored cursor
 - At this point, User #2 can access and make changes to the displayed content
- Note:** User #2 has complete access to User #1's computer, beyond the file/content being displayed
- Once the collaborative session has ended, the content can be saved to the hard drive of User #1's computer. If desired, User #1 could use the "File Sharing" capabilities of VIA to share the edited document with all participants.
 - The person who is sharing their content now clicks the same Disable Control icon, disabling the ability for any other participant to control/modify

their content.

4.8 Files (Cloud)

The **VIA** "Files" or **VIA** hard drive, is *internal* memory storage by default. In the settings, you have the option to select any external drive or network storage as your preferred "Files" directory.

Selecting Files launches a standard file management system, enabling you to select files to be stored directly on the **VIA** unit. The **VIA Collage** has 64GB of internal memory.


The Files (Cloud) on the client user interface is the feature used to send a file from your computer to all participants. A copy of all shared files is also stored on the **VIA** Files (Cloud) feature but not been saved on VIA Collage unit.

On **VIA Collage**, the user is given two options when they select a file to share:

- Share the file just to VIA – to open it locally on the **VIA Collage** to view and edit (for example - share an Excel spreadsheet to the Collage to open and edit as a group)
- Share the selected file with all connected participants

Note: You can map your Files (Cloud) to any external memory storage or network drive through the "Settings" feature of your VIA.

To access Files (Cloud) data:

- Click *Features* and then click the Files icon  to go to the Cloud directory where all the users' shared files were saved.

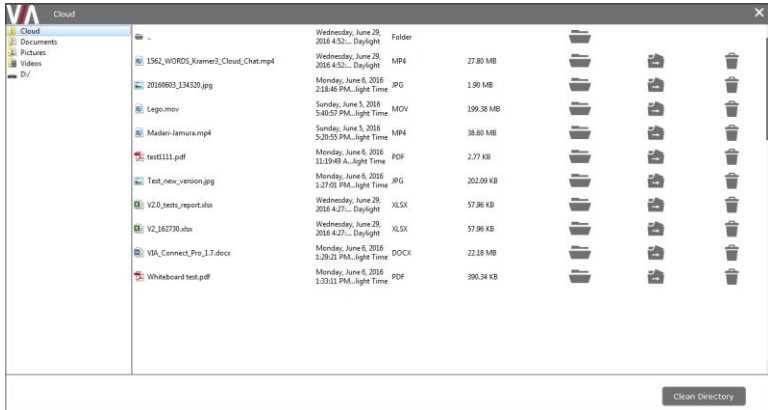



Figure 10: Shared Files on the Cloud

- To delete a single file from the cloud directory, click the Trash icon . A warning note appears that this is a permanent deletion.
- To delete all files from the cloud directory, click Clean Directory. A warning note appears that this is a permanent deletion.

4.9 Whiteboard Collaboration

The whiteboard function creates a canvas on the **VIA Collage** hub. With whiteboard, you can:

- Access a wide range of drawing and annotating tools
- Comment on any content shown on screen
- Insert any kind of images
- Annotate on an extended desktop

To open the Whiteboard:

- Go to the main menu and click the Whiteboard icon. This starts a whiteboard session on **VIA Collage**.

4.10 Whiteboard Functions

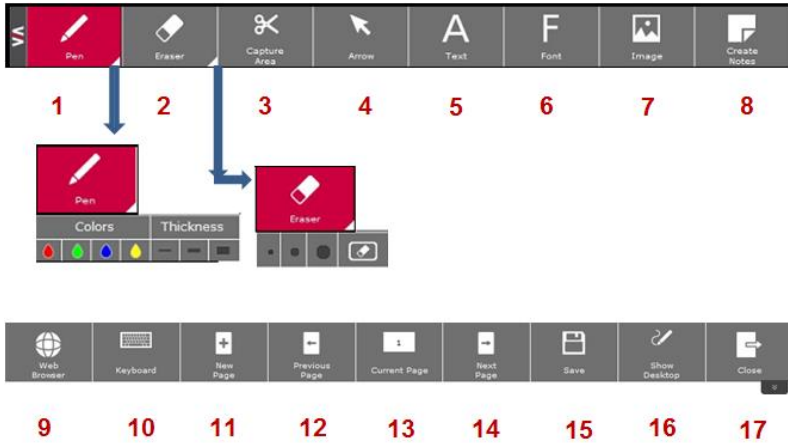




Figure 11: Whiteboard Toolbar

Item	Icon	Action
1	Pen	Enables drawing on the whiteboard: Tapping on the White Triangle opens Colors & Thickness options selection
2	Eraser	Erases your annotations: Tapping on the White Triangle opens Thickness options selection
3	Capture Area	The mouse pointer turns into a plus sign. Click the upper left corner of the area you want to capture and drag along the screen to the limit of the capture. The selected area is displayed in gray. The area is then included in the current or new page as an object
4	Arrow	Selects any object or image
5	Text	Inserts text on your whiteboard page
6	Font	Changes the text font of your whiteboard page
7	Image	Inserts an image at your whiteboard page
8	Create Notes	Creates comments or remarks about your annotation on your whiteboard page
9	Web Browser	Opens your default web browser and offers annotation tool
10	Keyboard	Opens a virtual keyboard to insert text on your whiteboard
11	New page	Creates a new page or to add a new page
12	Previous page	Moves to previous page (when multiple pages added)
13	Current Page	Moves to current page (when multiple pages added)
14	Next page	Moves to next page (when multiple pages added)
15	Save	Saves all your activities either as PDF or as JPEG format
16	Show Desktop	Displays your desktop with all running applications. The user can also annotate at the running application using the desktop stylus
17	Close	Closes Whiteboard screen.

Note: Whiteboard toolbar can be moved to bottom (and back to top) of the display by clicking on the small arrows visible at right side of the toolbar  

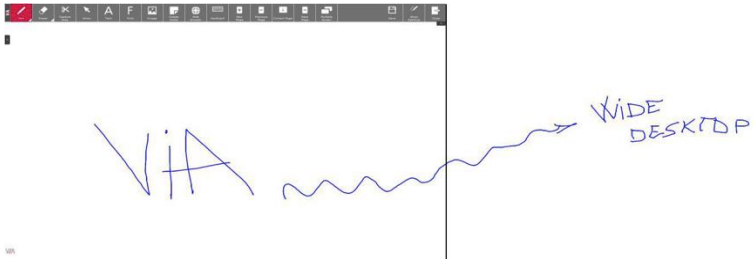












Figure 12: Wide Desktop



Figure 13: Multiple Screen

4.10.1 Show Desktop


Show Desktop allows you to hide the whiteboard and to navigate freely on your desktop. A toolbar is available for making annotations on your desktop and capturing an object. For example, capture an area of the screen and add it as an object in your current page.

Icon	Name	Action
	Pencil	Draws on the whiteboard (You can change the color and the thickness of your pen by selecting the options available from the bottom white triangle)
	Eraser	Erases precisely what you have drawn on the whiteboard (You can change the thickness of your eraser by selecting the options available from the bottom white triangle)
	Pointer	Selects any object you want to move
	Window selection	Directly captures a window and all of its content
	Capture Area Tool	The mouse pointer turns into plus sign. Click and drag over the desired area
	Notes	Adds remarks or comments about the annotated content
	Virtual Keyboard	Inserts text on the whiteboard
	Save	Saves your activity in either .jpg or .pdf format
	Whiteboard	Press this icon to immediately switch to your full screen whiteboard page
	Exit	Exits the whiteboard

4.10.2 Screen Share

Screen Share allows the admin to share his screen with all available users so that the user can see all the activities of the gateway running at their local system only.

To use Screen Share:

- Click features and then click Screen Share 
- The user sees the collaboration display screen at their system and a check mark is shown on the Screen Share button

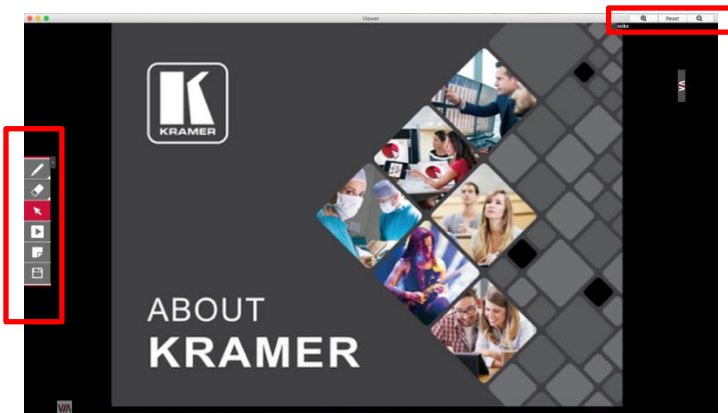


Figure 14: Screen Sharing

The user can zoom in and out by using the magnifying glass “+” and “-” at the top of the window. Using the Tool bar on the left, you can “Pause” on any slide to annotate it and “Reload” at any time to resume to current presented slide.


- To view the main collaboration display on the user’s system, the user needs to stop both his display and media

4.11 Showing Content from a Third Party Device

VIA Collage gives you the flexibility to show content from any connected third-party device such as a media player, Apple TV, Roku, video cameras with composite video or HDMI outputs, and Samsung’s AllShare Play wireless hub, along with your

display. You can connect an extra device to **VIA Collage** using the HDMI input, or add an external HDMI switcher to select from multiple third-party devices.

To use this feature:

- Click Features, then click Show/Hide output of HDMI Input 

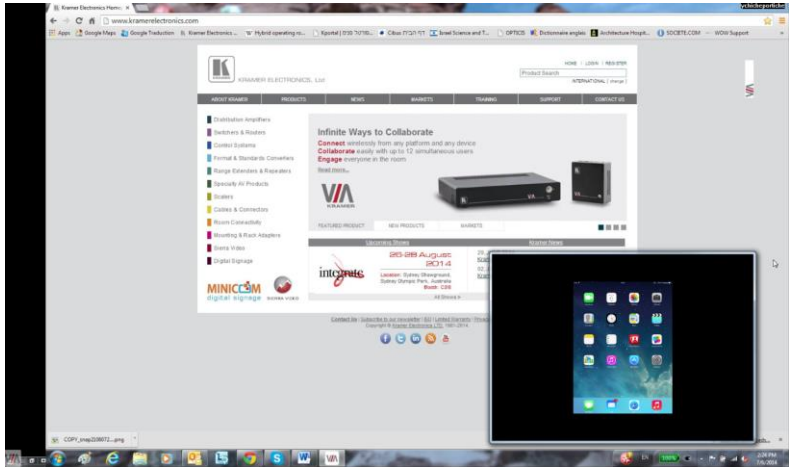



Figure 15: Showing a Third-Party Screen

4.12 Picture-in-Picture

The **VIA Collage** Picture-in-Picture feature lets you toggle between full-screen mode and PIP mode for HDMI Input.

To use PiP:

- Click **Features**, and then click **Picture-in-Picture** 

This toggles the HDMI Input video signal mode between PIP and Full Screen.



If the message shown below appears when HDMI Input is selected, it means that there is no device connected to **VIA Collage**'s HDMI input, or a connected device is not turned on. Report this condition to the admin.



4.13 Calling with Skype

VIA Collage lets you call using Skype to any other Skype user in the world.

To activate Skype:

- Click **Features > Third Party Apps** and click 

This launches Skype and you can login and call/chat with any available contact

4.14 Using GoToMeeting

GoToMeeting is integrated with **VIA Collage**, providing you with a simple and powerful way to hold unlimited online meetings. A **VIA Collage** admin can start a meeting and share his screen with any available user, anywhere in the world.

To launch GoToMeeting,

- Click Features > Third Party Apps and click



This takes you to the GoToMeeting website (<http://www.gotomeeting.com/fec/>) where you can download the executable file and start an online meeting

4.15 Using WebEx

WebEx is a conferencing program which lets you and others meet online and share files, information, and expertise. WebEx is integrated with **VIA Collage**.

To activate a WebEx online meeting:

- Click **Features** > **Third Party Apps** and click the WebEx icon



This links to the WebEx Web site (<http://www.webex.com/>) from which you can download the app and start online meetings.

4.16 Using Microsoft Lync

Microsoft Lync provides instant messaging, voice over IP and video conferencing.

To start video conferencing with Microsoft Lync:

- Click Features > Third Party Apps and click



This opens the Microsoft Lync sign-in page. The user can login and start messaging or video conferencing.

4.17 Accessing a Web Page

VIA Collage can directly launch a Web browser. You do not need to exit **VIA Collage** to open a Web site, or launch a Web-based presentation.

To open the Web browser:

- Click **Features** and click the Web Browsing icon



This opens the default browser (Internet Explorer) through **VIA Collage** and you can navigate to any Web site or online video/presentation file.

Note: In the Web management interface of the settings, you can change the default browser to any one you prefer. For more details, see the Web management settings section.

4.18 Settings Menu

The Settings menu is where you configure your **VIA Collage** unit and manage third party applications. More settings are available from the web interface management console.

The Settings menu tabs include:

- LAN Settings – configures network parameters
- Third Party Apps – installs/removes third-party software applications
- System Controls – Setup your audio and display preferences, check health status, ...

To open the settings page use keyboard and mouse connected to **VIA Collage** unit:

1. Click Features to expand
2. Click Settings.

It requests the password for the **VIA Super User**



3. Enter the password “supass”. The user name is “su” by default
The Settings screen opens:

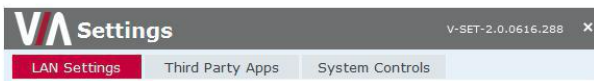


Figure 16: Settings Screen

4. After settings are defined, click the Reboot tab to apply all.

4.18.1 LAN Settings

Use LAN settings to change the IP address, DNS and default gateway of **VIA Collage**. Your **VIA Collage** unit is set to DHCP LAN settings by default.



When changing these settings, make sure they are correct. Incorrect values can cause a loss of communication.

To change the IP address:

1. Click LAN Settings
2. Enter as required the IP address, subnet mask, default gateway, DNS server



Figure 17: LAN Settings Screen

3. When finished, click Apply Settings
4. Click OK at the Confirmation Message
5. Click Reboot to restart the system with the new settings

4.18.2 System Control Settings



Figure 18: System Control Screen

VIA Collage is pre-activated by Kramer. If your unit needs to be re-activated, contact Kramer Technical Support.

4.18.3 Third Party App Settings

The Third Party App feature allows the user to add a shortcut to any third party applications already installed on **VIA Collage**. The user can then launch these applications without exiting **VIA Collage**.

The administrator can also install any other third party application that is not available on the system that a user wants to run.

To add a third party application shortcut:

1. Click Third Party Apps
2. Click Add Application Exe File
3. Browse to the executable of the application that you want to add as a shortcut, for example go to: C:\Program Files (x86)\Kingsoft\Kingsoft Office\office6 and select wpp.exe to add the shortcut of Word of Kingsoft Office

4. Click Reboot



Figure 19: Third Party Apps Screen

The user can also change the icon image and name of the added third party application.

To change the icon image and name of application:

1. Click "Advance" tab.
2. The Set Application Name and Icons page opens.
3. Click "Click here" to browse and change the icon image.
4. Change the application name from "Application Name" field.

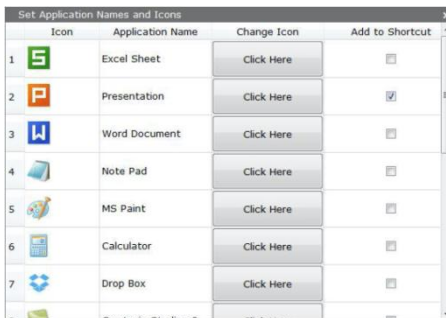
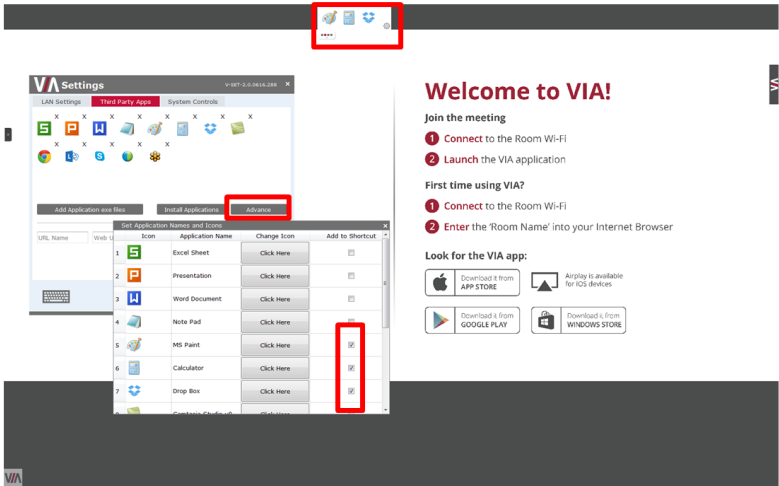


Figure 20: Setting Application Name

5. Close this page and the settings page as well.

6. Reboot the **VIA Collage** hub

If you want to add a shortcut of any of these apps to your main display, check the “add to Shortcut” checkbox for quick access to these apps.

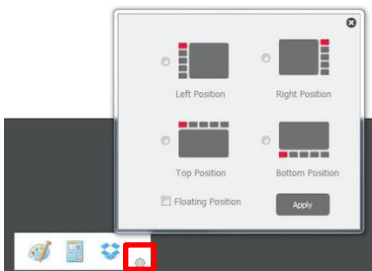


7. Close this page and the settings page as well.

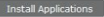
8. Reboot the **VIA Collage** hub.

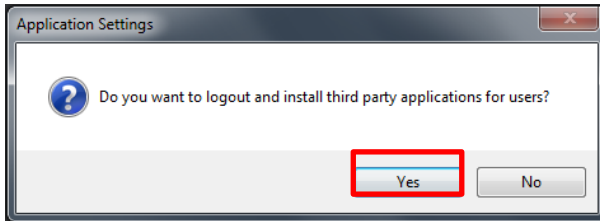
To control the 'Quick access app' bar position:

- Open “settings” from the bar and change the bar location



To Install a Third Party Application:

1. Click Install Applications 
2. When asked to logout as a **VIA Collage** user, click Yes



3. Login again as an administrator and now you can install any application. The default password is “viaadmin”.
4. Now download any application on your system and install it on the unit.
5. Reboot the system after installation and add the application shortcut under third party apps for future use as explained above.

The user can also create a link with an associated icon to a desired Web page. She/he must give this icon a special “URL Name” and type in his “Web URL”, for example:

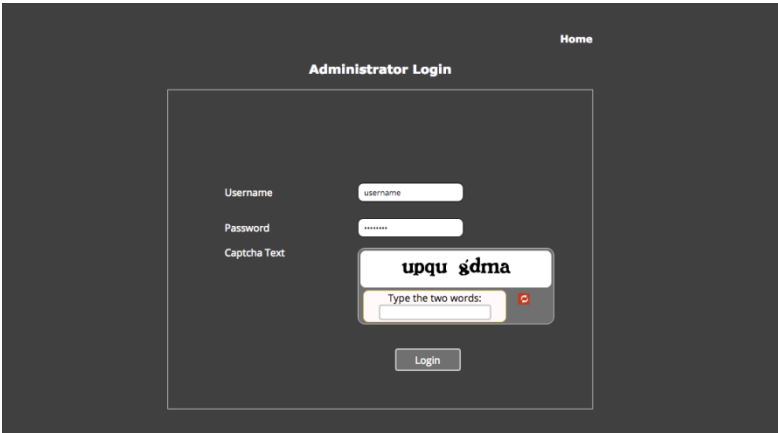
URL Name	Web URL	Icon	Save
----------	---------	------	------

After rebooting, the link to this specific Web site is accessible from the Third Party Apps icon, in the main feature menu.

4.18.4 Managing Settings from the VIA Web Management Interface

To manage settings using the Web browser:

1. Open the Web browser and enter the IP address for your **VIA Collage** unit
2. Enter user name “su” and password “supass”.



3. Insert the exact presented text on Captcha field to Captcha text field and press the “Login” button
Note: You can change the presented text by pressing the ‘Refresh’ button on the left.

4. Click **VIA Management** tab to access the Settings menu.
Note: Any additional user can be created and get “Web administrator” credentials.

4.18.4.1 Network Settings

Use Network settings to change the IP address, DNS and default gateway of **VIA Collage**. Apply Settings after finishing and Reboot your device.

Information about the Disk Space in use can be found here, as well as the MAC address of the **VIA Collage** device.

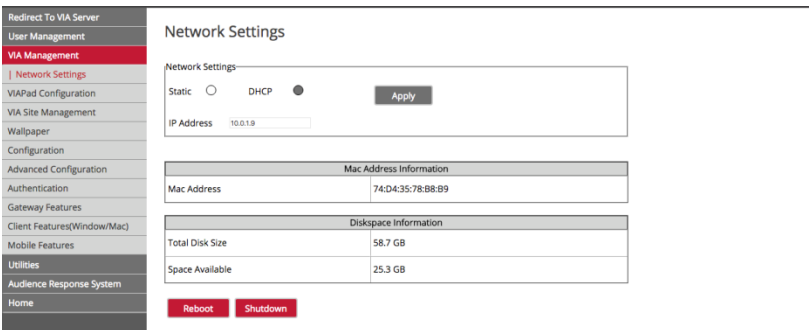


Figure 21: VIA Management - Network Settings

4.18.5 VIAPad Configuration

For entities using VIA Pad, the first required step is to configure the **VIA Collage** unit in order to allow it to pair the VIA Pad devices.

VIAPad Configuration

- **Guest mode:** Enable this mode in case you want the VIA Pad to act as a simple “Present / Stop presenting” touch device. No client application is shown on the user’s display
- **VIAPad overrides Room Code:** Enable this feature if you want the VIA Pad to bypass the need to type in the Room Code authentication
- **Room Name:** Is automatically populated; it reflects the name of the **VIA Collage** device

WiFi Configuration

- **Auto Connect to WiFi:** Enable this feature if you want the VIA Pad to connect automatically to the WiFi network of the Meeting Room. You are prompted for the following details:
 - **SSID:** Enter the name of the WiFi network – make sure that you write it EXACTLY as defined (it is case sensitive!)
 - **Authentication Mode:** Select the security used by your WiFi router among the preset options (WEP Open/ WEP Shared/ WPA Personal/ WPA2 Personal)
 - **Encryption:** Select the type of encryption key used by your router
 - **Key:** Type the password required to join your network

Apply Settings to save the configuration.

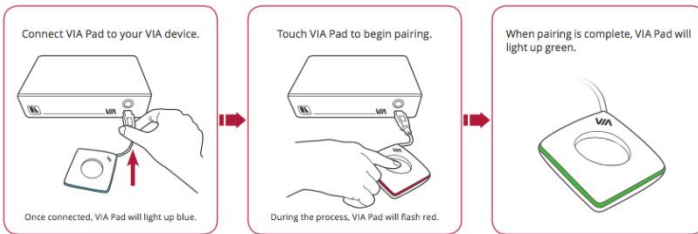
Redirect To VIA Server
User Management
VIA Management
Network Settings
VIAPad Configuration
VIA Site Management
Wallpaper
Configuration
Advanced Configuration
Authentication
Gateway Features
Client Features(Window/Mac)
Mobile Features
Utilities
Audience Response System
Home

VIAPad Configuration

VIAPad Configuration	
Guest	<input type="checkbox"/> ?
VIAPad will override Room Code	<input checked="" type="checkbox"/> ?
Room Name	10.0.1.9

Wifi Configuration	
Auto Connect to WiFi	<input checked="" type="checkbox"/> ?
SSID	<input type="text"/> ?
Authentication Mode	Select <input type="button" value="v"/> ?
Encryption	Select <input type="button" value="v"/> ?
Key	<input type="text"/> ?

Pair your VIA Pad devices as shown below:



4.18.5.1 VIA Site Management

VIA Site Management Server (VSM Server) is an optional software application (subject to a separate pricing) that allows an administrator to monitor and make changes to all connected **VIA Collage** or Connect gateways. It is a Web-based interface that allows the administrator to:

- Add or modify an existing VIA Gateway (**Collage/Campus/Connect PRO**)
- Push various settings like configuration, gateway features, client features, etc. to Collage/Campus/ConnectPRO units
- Update Collage/Campus/ConnectPRO units from the VSM when the updates become available
- Manage the following statuses for all Collage/Campus/ ConnectPRO units

attached to the VSM:

- CPU usage
- HDD usage
- Off/on status
- Configuration and download status
- Version status

The VSM can automatically provide individual configuration to added gateways or the settings can be configured locally.

Some changes must be made to the gateway before it can be managed from a VIA Site Management Server.

- Type the VIA Site Management Server IP
- Type a Gateway ID (a gateway ID can be a random alphanumeric one, as long as it is unique. It helps identify the VIA Collage/Campus/ConnectPRO unit in question.)
- Click **Validate and Save** for changes to take effect immediately (VIA device should be able to connect to the VSM while validating)
- Click **Save** for changes to be saved with no validation in front of the VSM (Note: since no validation is made immediately, any error entered at this stage –like duplication of ID- must be corrected manually at a later stage)
- Choose the settings “From VIA Site Management” to download the setting from the VSM server or choose “From Gateway” to keep the local settings.
- Click **Reboot** to restart the unit

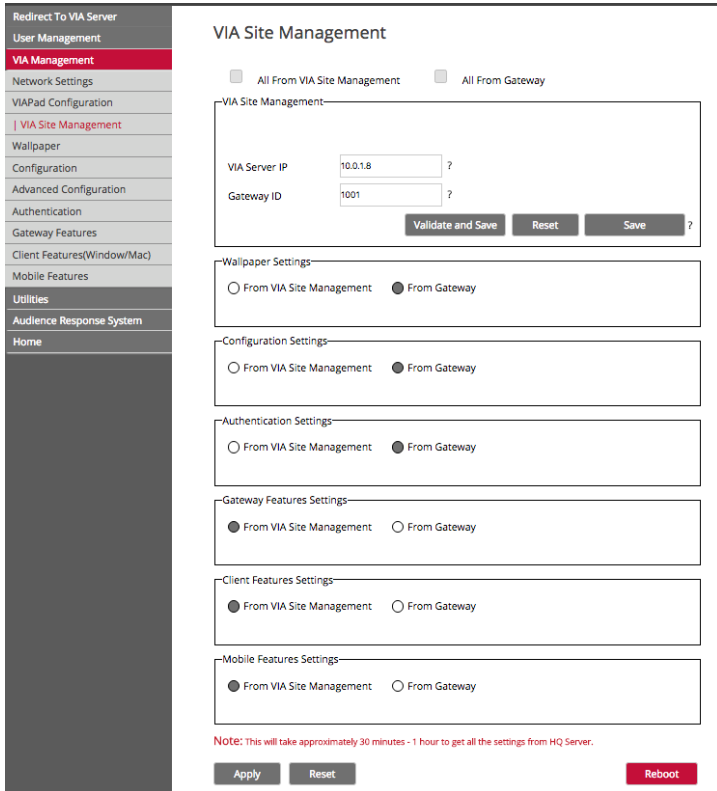


Figure 22: VIA Site Management

Contact your regional sales representative for more details about this solution.

4.18.5.2 Wallpaper

This feature allows any corporation or institution to change the default screen to match their branding and in-room equipment usage instructions.

To change the wallpaper:

1. Click **Upload Wallpaper**
2. Select Wallpaper (must be an image file – jpeg, png, bmp) from your system

3. All previously uploaded wallpapers are saved and shown as below. To select one of them, click “**Set**”. To delete one of them, click “**Delete**”.

4. Then click **Reboot**

The background image on **VIA Collage** changes after rebooting

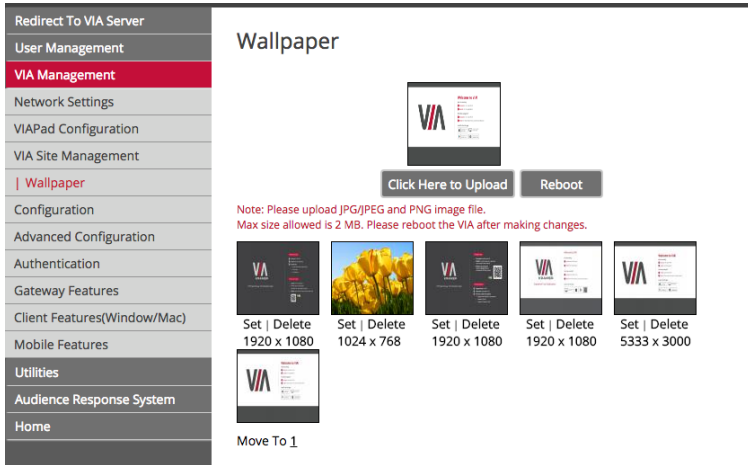



Figure 29: VIA Management – Wallpaper

4.18.5.3 Configuration

Configuration settings are:

- **Do not start HDMI input on startup** – Activate/Deactivate HDMI input when powering the unit on
- **Activate PIP Mode** – Shows the output of the third party device (**DIP30**, Apple TV, Media Player, etc) as a PIP on **VIA Collage**. Otherwise, the output of a third party device is shown as a full screen image
- **Reset PIP Position** – Resets the default PIP position if the size or position of the default PIP window was changed
- **Activate System Log** – Activates the logging of all system activity either by the client or the gateway to aid diagnosing a problem with **VIA Collage**
- **Activate Media Mode** – If multiple displays are connected to **VIA Collage**, the first display is reserved as the media screen. Multimedia files play only on the first display and the presentation shows on the second display

- **Enable Quick Client Access** – shows VIA transparent icon on the bottom left corner of the screen, shortcut to the VIA app
- **Disable Always On Top - VIA Minimised icon on Gateway** - Hides the VIA menu icon from the right corner of the main display: 
- **Do Not Disturb** – This feature is aimed to easily enable a Do Not Disturb mode that allows a user to present to the main display without any interruptions. Clicking the DND button prevents ALL interruptions. The user that clicked DND has full access to all features:



DND Activated

The other users can see a modified user interface that is only allowing access to two things: View Main Display & Participants' List. The View Main Display icon replaces the Present button and Features icon is grayed out:



The User that enabled DND must disable DND to allow other participants to gain full functionality once again.

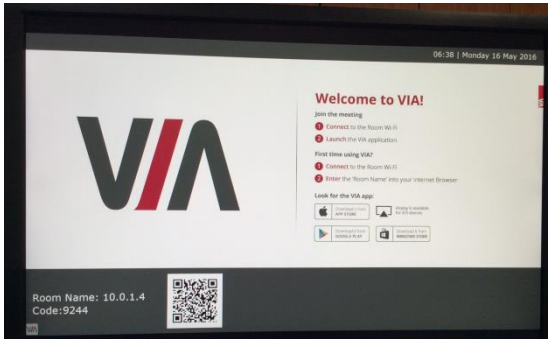


DND De-Activated

- **Facility to Activate/Deactivate Chat by Moderator** – This option is offered to the Moderator of a session, to restrain users from chatting
- **Activate Third Party Shortcut** – Make a shortcut to your preferred 3rd party apps on the main screen
- QR Code Scanning
 - Check “Enable QR code” and “By pass room code” (if required) and

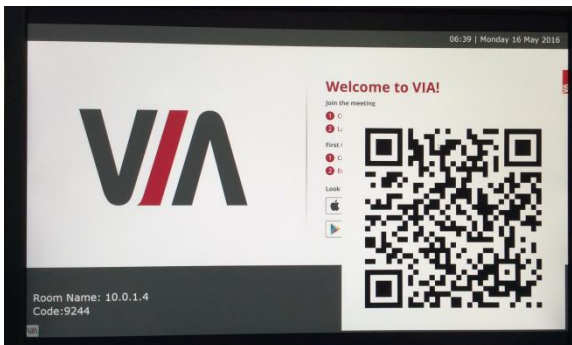
click the “Reboot” button

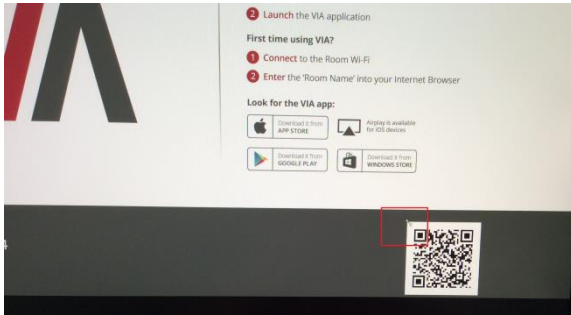
- Select “Keep QR code always on top” to allow the QR to be always visible on top of any content presented on main display.
- You can select “Print QR Code” if you need to get a hard copy of it for displaying it in the room.
- Relocate & Resize the QR Code:



To relocate the QR code on the VIA main display, click and drag it with the mouse and drop it anywhere on the screen.

- To resize QR code, click and drag it from the code frame to any desired size.





- **Display Layout settings:** Deactivate Auto-Hide Thumbnails (fade out of the side thumbnails after few seconds)
- **Display Layout:** Select the layout between Thumbnail view and dynamic view

Room Code, Room Name Settings:

- **Show Room Name on Wallpaper | Room Name Color:** This feature displays the Room Name (a standard IP address) on the **VIA Collage** home screen. By default, it displays the current IP address, but you can change it to a Domain Name System (DNS) name if local DNS services are supported by the network. To change the Room Name, enter the new address or DNS name, then click Apply and reboot **VIA Collage**. To login any device to the **VIA Collage** client, you must enter the same Room Name in the location field on your device. You can also select the color to apply to this Room Name on main screen.
- **Activate Room Code | Room Code color:** The Room Code is a security overlay feature that generates and updates a four-digit code. It appears on the lower right of the **VIA Collage** home page. When activated, this code must be entered by any device before logging into **VIA Collage**. You can also select the color to apply to this Code on main screen.
- **Always show on Wallpaper:** If the room code is activated, it always shows on the wallpaper below the room name, otherwise the room code only shows when logging into any client. Set here also the refresh time of the Room Code (30 minutes as default).

- **Show Date Time on Wallpaper | Date Time color:** Displays the date/time on the top right of the display. You can also select the color to apply to this Date & Time text on main screen.
- **Show Room Name / Code on second Display also:** Supported only if there is a second display connected to the **VIA Collage** unit. This feature allows you to show the Room Name on the wallpaper of the second display connected.

iOS Mirror:

Activate or deactivate the iOS Mirroring feature:

- When activated the first time, the VIA's AirPlay device is named VIA_AirMirror_XXXX, where XXXX is a random combination of letters and numbers. This is the name that appears when you look for AirPlay devices on your iOS device and it can be changed.
- Additionally, it defaults to allow 4 iOS devices to be mirrored to the VIA Collage simultaneously. This setting can also be changed. Once these setting changes have been made, click Apply. Reboot the VIA Collage to allow the settings to take effect.

Auto Power Off Timing:

- Activate this feature to allow the unit to Auto Power Off at a selected time (note that it is a 24-hour based clock).

Language:

- Select your preferred language for your VIA interface

Date and Time Format for Web interface:

- Select your preferred Date and Time format

- Redirect To VIA Server
- User Management
- VIA Management**
- Network Settings
- VIAPad Configuration
- VIA Site Management
- Wallpaper
- | Configuration
- Advanced Configuration
- Authentication
- Gateway Features
- Client Features(Window/Mac)
- Mobile Features
- Utilities
- Audience Response System
- Home

Configuration

Configuration

- Do not start HDMI input on startup
- Activate PIP Mode Reset PIP Position
- Activate System Log ?
- Activate Media Mode ?
- Enable Quick Client Access ?
- Disable Always On Top - VIA Minimized icon on Gateway ?
- Do Not Disturb ?
- Facility to activate / deactivate chat by Moderator ?
- Activate Third Party Shortcut ?

QR Code

- Enable QR code ?
- By pass room code ?
- Keep QR code always on top Print QR Code

Display Layout

- Deactivate auto-hide thumbnails. ?
- Display Layout ?

Room Code, Room Name Settings

- Show Room Name on wallpaper | Room Name Color Apply
- Activate Room Code | Room Code Color
- Always show on wallpaper
- Room Code Refresh Time(Minutes)
- Show Date Time on wallpaper | Date Time Color
- 24 hours format

Show Room Name/Code on second Display also(Dual Display Only) ■

Note:Room Name/Code will be shown only if they are active

iOS Mirror

Mirroring ON OFF ?

Mirror Name

Max no of mirrors ?

Auto Power Off Timing

Activate ON OFF ?

Time of Day - Hours Minutes

Language

Select Language

Date and Time Format for Web interface

Date Time Format

Figure 30: VIA Management – Configuration

4.18.5.4 Authentication

In this section, you can activate Moderator and Participant modes. In these modes, a participant requires permission from the moderator to use the “Present” function on **VIA Collage**.

To enable Presentation Mode:

- Select Activate Moderator Mode
- Select which mode you want to use and reboot VIA Collage gateway

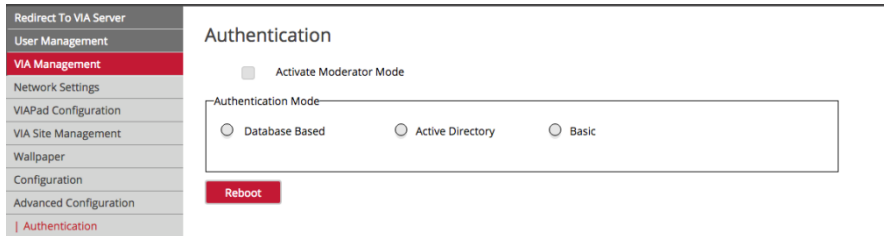


Figure 23: VIA Management – Authentication

There are three different moderator modes:

A. Database Based

This mode requires building a database of users that can access the system. The users receive credentials (username and password).

There are two default users available to login into **VIA Collage** client in Moderator mode.

Moderator:

- Default user name: su
Default password: supass

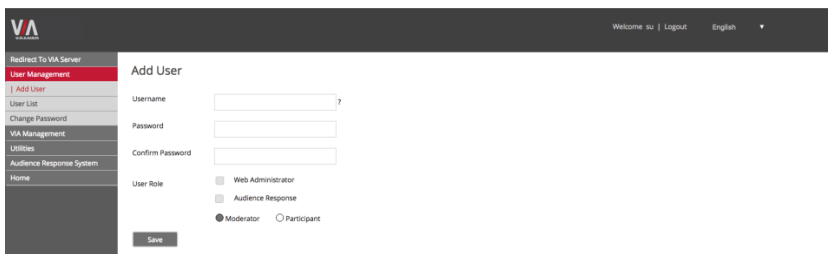
Participant:

- Default user name: user
Default password: userpass

You can create more users as needed.

To create users:

- Open the **VIA Collage** Web site by entering the **VIA Collage** IP address in any Web browser (or open a browser from any client PC connected to same network and enter VIA Collage IP address)
- At the top, login with default moderator username (supass). The moderator can create a database of participants by assigning a Username, Password and Role (Moderator or Participant) to each one of them, as shown in [figure](#) below



The screenshot displays the VIA Collage web application interface. On the left is a navigation menu with options: 'Redirect To VIA Server', 'User Management' (highlighted in red), 'Add User', 'User List', 'Change Password', 'VIA Management', 'Utilities', 'Audience Response System', and 'Home'. The main content area is titled 'Add User' and contains the following fields and options: 'Username' (text input), 'Password' (text input), 'Confirm Password' (text input), and 'User Role' with three radio button options: 'Web Administrator', 'Audience Response', and 'Moderator' (which is selected). A 'Save' button is located at the bottom of the form. The top right of the page shows 'Welcome su | Logout' and 'English' with a dropdown arrow.

Figure 24: Moderator Mode

Now any user who was created by the moderator can get permission to join the session.

It is also possible to select one or more users to be “Web Administrator”, with the ability to change the settings from the Web administration interface.

To login into the **VIA Collage** client when Presentation Mode is activated:

- Open the **VIA Collage** client and enter the location (IP address of the **VIA Collage** gateway)
- Enter user name and password (as defined by moderator)
Now you see the Room Code field.
- Enter the room code (if Room Code is activated)

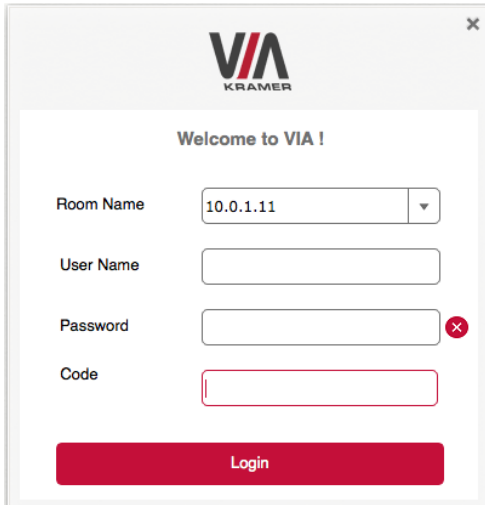
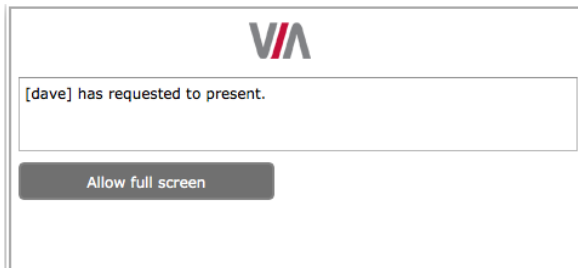


Figure 25: Login Screen When Moderator Mode is Active

- Click Login

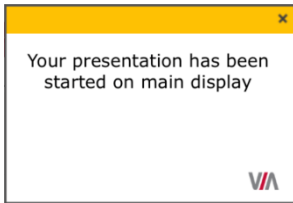
To start a presentation:

- Click “Present” and **VIA Collage** sends a request to the moderator for display permission



- The moderator clicks on “Allow” to start the participant's presentation on the collaboration display

- The user gets the following message:



The presentation is now visible on the **VIA Collage** main display

Note: The moderator can "Present" at any time without permission.

B. Active Directory

Groups grant access to resources. Organizational units (OUs) control objects and delegate group policy settings. **VIA Collage** seamlessly integrates with Active directories (ADs) to avoid the hassle of creating users from VIA Collage's Web UI.

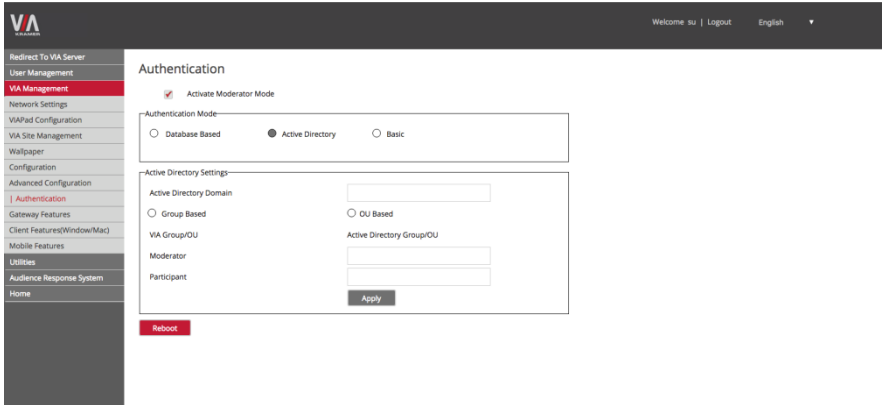
VIA Collage Gateway contains the following groups that must be mapped with Active Directory groups or organizational units:

- **Moderator:** A user with meeting moderator rights i.e. this user can directly display his screen on a VIA Collage Gateway and can allow a participant requesting for presentation on the main display.
- **Participant:** A participant of a presentation session who can join the meeting room but cannot project their desktop without the moderator's permission.

Active directory must have groups or OUs similar to the above Moderator-Participant hierarchy. Do not use groups which have any employee in common.

If there is no such group or OU, create them in such a way that an employee is not in the moderator and the participant group at the same time.

Note: All connecting devices must be governed through this AD or they cannot login.



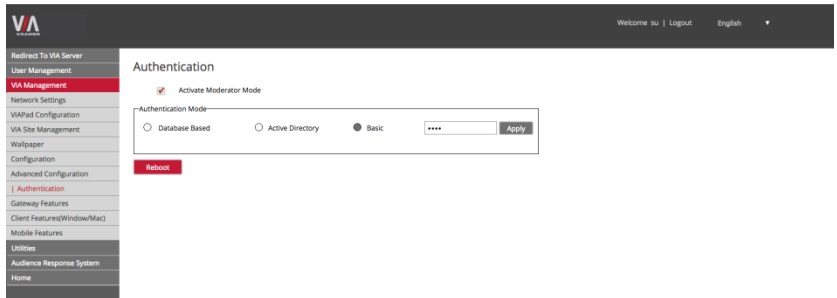
1. Click **Activate Presentation Mode**.
2. Click **Active Directory** under **Authentication Mode**.
3. Under **Active Directory Settings**, type in the Active Directory name in **Active Directory Domain** text box.
4. Select the **Group Based** or **OU Based** radio button as per your Active Directory configuration.
5. Based on the above selection, type the name of Moderator and Participant Group/OU in their respective boxes.

Note: **VIA Collage** does not discover and connect to the Active Directory; rather it relies on you to correctly enter the details. If there is a typographical error in any of fields, the users (Moderators and Participants) cannot log in.

6. Click **Apply** and **Reboot** to apply the changes and restart the unit.

For further details, refer to Kramer's white paper "*VIA Integration into DNS and Microsoft Active Directory*".

C. Basic Moderator Mode

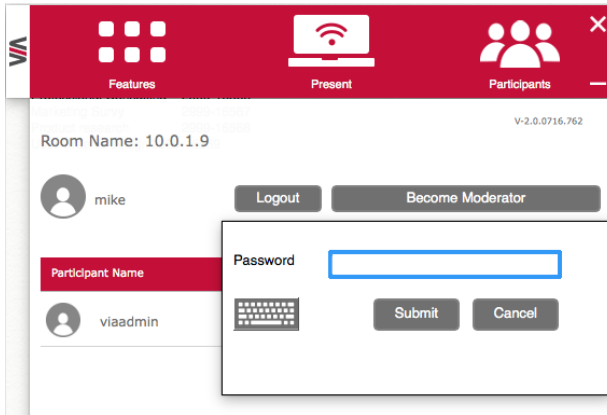


Basic is the simplest moderator mode. By selecting the “Basic” check box and rebooting the system, the VIA unit now asks the administrator to select a password that is used by the participants who are requesting to be moderators.

Once a password is entered, click Apply and reboot the VIA device.

To login into the **VIA Collage** client when basic moderator mode is activated:

1. Open the **VIA Collage** client and enter the location (IP address of the **VIA Collage** gateway).
2. Enter the nickname.
The Room Code field appears.
3. Enter the room code (if Room Code is activated).
4. Click **Login** and go to Participants' screen
You can become now a moderator by selecting “Become Moderator” and entering the password.
5. Click “**Leave Moderation**” anytime to stop moderating the session. Anyone else can now click “Become Moderator” and type in the password to access this privilege.



4.18.5.5 Gateway Features

Manage the features available on the VIA gateway (see [Figure 26](#)):

- Change the default Whiteboard and Web Browsing applications by your preferred ones. Click the application you want to change and browse your computer to find the one you want to associate as default.
- Remove the features you don't want to offer to the users. Click ⊗ on the icon you want to hide. Note that any removed feature is just hidden and not deleted. The space allocated to this specific icon is left blank so you can reorganize manually the order of the icons by simply dragging them to your preferred scheduling. Click "Apply" and Reboot your unit to apply these changes.

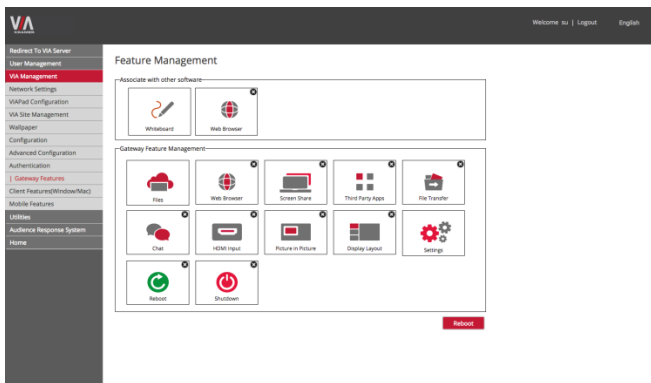


Figure 26: VIA Management – Gateway Features

4.18.5.6 Client Features:

Manage the features available on the VIA client (PC/MAC) application (see [Figure 27](#)):

Remove the features you don't want to offer to the users. Click ⊗ on the icon you want to hide. Note that any removed feature is just hidden and not deleted. The space allocated to this specific icon is left blank so you can reorganize manually the order of the icons by simply dragging them to your preferred scheduling. Make sure you click "Apply" and Reboot your unit to apply these changes.

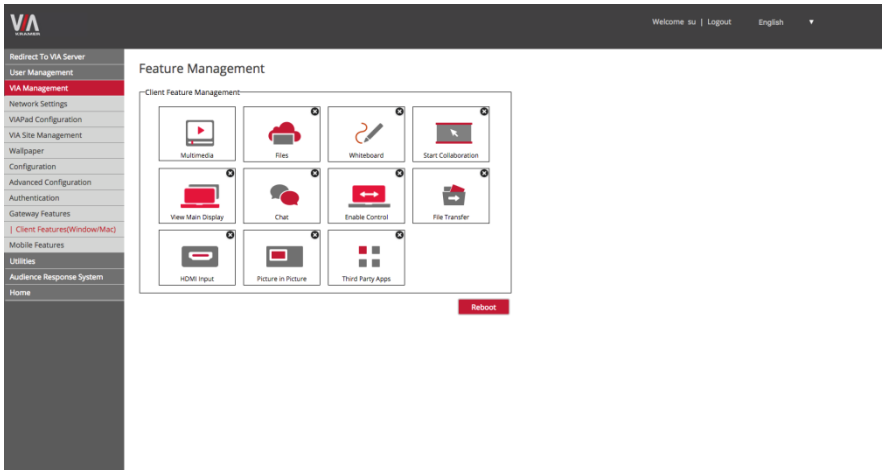


Figure 27: VIA Management – Client Features

4.18.5.7 Mobile Features:

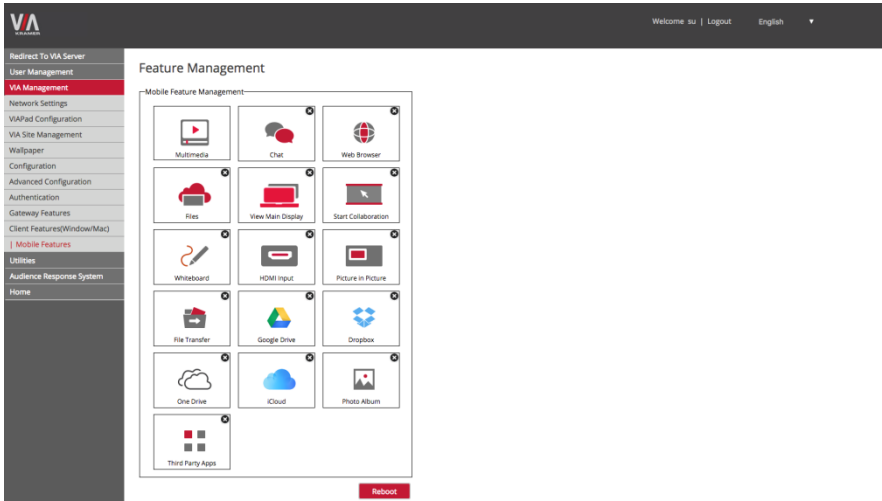


Figure 28: VIA Management – Client Features (Mobile)

Manage the features available on the VIA Mobile (iOS/Android/Windows) applications (see [Figure 32](#)):

4.18.5.8 Gateway/Webadmin Activity Logs

Missing

Figure 29: Utilities - Gateway Activity Log

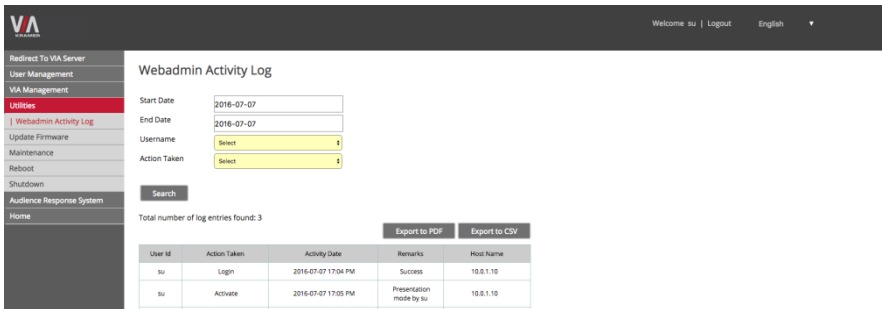


Figure 34: Utilities – Webadmin Activity Log

4.18.5.9 Update Firmware

To update your **VIA Collage** unit through this interface , save the downloaded file to your computer and extract all files (the extracted file contains: VIA Collage release notes document, VIA Collage Upgrade procedure document, VIA Collage update zip file). **ONLY** use the .zip file (as a compressed file – do not try to uncompress it) available for download from our technical support Web page:

<http://www.kramerelectronics.com/support/downloads.asp>

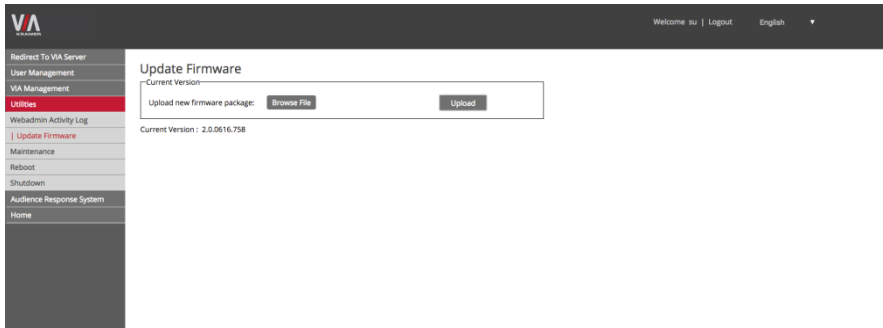


Figure 30: Utilities - Update Firmware

4.18.5.10 Maintenance

Click **Utilities** on the left menu and then select **Maintenance**.

You can select one by one the default configurations you would like to reset or simply click “select all” to reset to complete default factory settings.

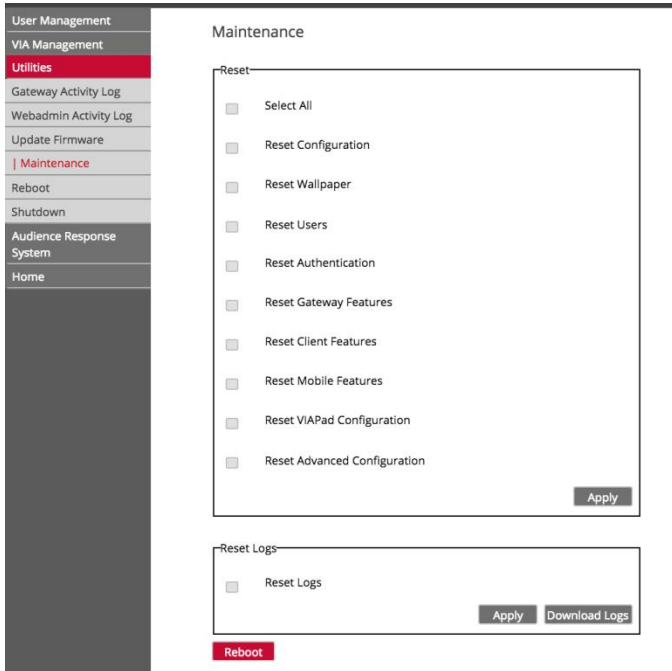


Figure 36: Utilities – Maintenance

4.18.6 Audience Response System

This feature offers two new modules for interactive learning in Education and Corporate training environments: e-Polling conducts surveys during collaborative sessions and e-Exam provides interactive multimedia tests for the students.

Both modules are currently in Beta version. Full functionality is expected by Q4-2016.

4.19 User Experience

VIA Collage enables a high level of collaboration in meetings. Participants can share files, chat, edit a common document, or stream full HD (1080p/60) video content. Following is a summary of **VIA Collage** functions:



Wireless Connection

Connect wirelessly with your own device



Enable Control

Give a participant control over a presenter's MAC® or PC laptop



Mobile Mirroring

Show any content from your iOS or Android device on the main display



Chat

Send an instant message to another participant



Full HD Video Streaming

Share uninterrupted full HD wireless video streaming (up to 1080p60) and photos



Third Party Apps

Join the meeting remotely with third-party apps, such as Microsoft Office®, Skype®, GotoMeeting®, Lync®, and WebEx®



Files

Drag and drop files to the Files folder to share instantly with other users



4K-UHD Output



File Sharing

Share any size file with any number of participants



Web Browser

Open any browser to display content from a Web site



Whiteboard

Annotate, illustrate and edit shared documents: touch-screen compatible



View Main Display

View the main screen on your own device.



Start Collaboration

Click to collaborate through a common display, using your own device. Multiple users can interact and control what's happening on the main display at the same time.



HDMI Input 1

Connect any HDMI source (camera, DVD, Blu-ray™) and present it on the main display.

Collaboration capabilities have been enhanced with the addition of the popular cloud services:

- Google Drive 
- DropBox 
- OneDrive 
- iCloud (for iOS users only) 

Link your cloud service (Google Drive, DropBox or OneDrive) account to your VIA application and enjoy full access to your online documents.

Select one file from your cloud service and select among the following options:

- Open - Open the file on your screen and “Present” to share it on main screen
- Download - Create a copy of your online file to easily access it from your VIA Multimedia Feature
- Share - Share the selected file using your preferred mailing service



Alternatively, enjoy the ability to select one file saved in your VIA Multimedia feature (photo, document or video) and choose to upload it to your cloud service account, for later usage.

Note: Different devices enable different features depending on the device capabilities. See the following illustrations.

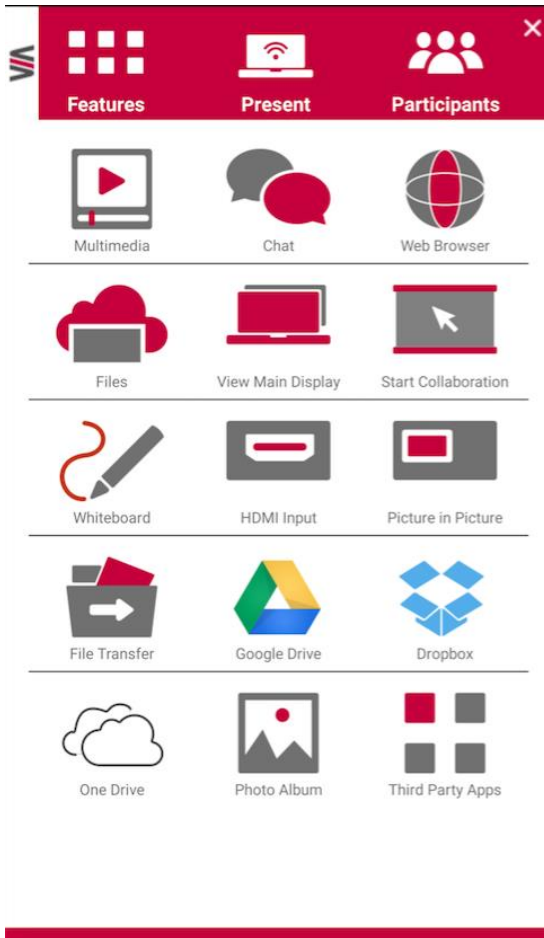


Figure 31: Samsung Galaxy (S6)

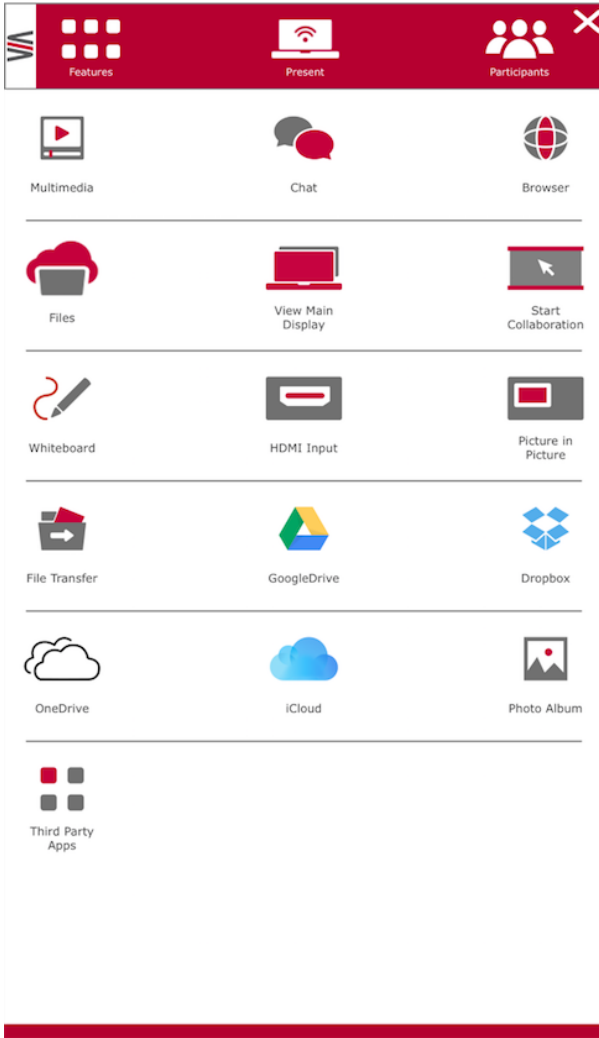


Figure 32: iPhone 6S+

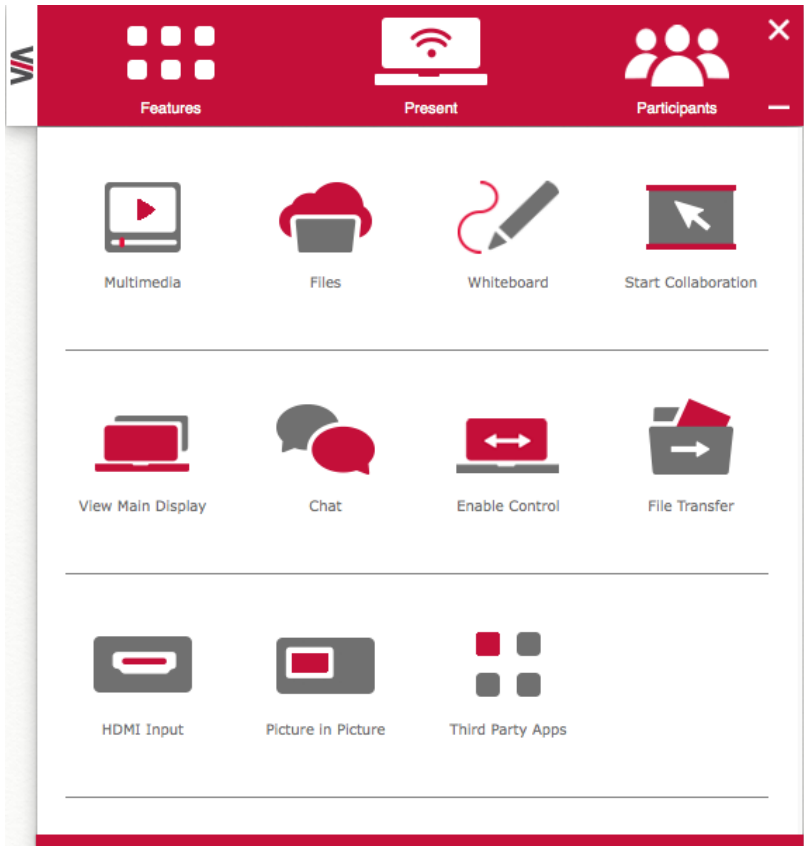


Figure 33: PC/MAC

5 Technical Specifications

PROCESSOR:	Quad core 2.9GHz, low power consumption
MAIN MEMORY:	4GB high speed
VIDEO INPUTS:	1 HDMI
VIDEO OUTPUTS:	1 HDMI, 1 DisplayPort
STORAGE:	64GB solid state drive
LAN:	Dual Gigabit LAN port, 10/100/1000 auto, 1 with iAMT 8.0 (not installed)
AUDIO:	Integrated High Definition Audio 5.1 channel HDMI embedded, 1 mic in and 1 line out on 3.5mm mini jacks
USB:	4 USB 3.0 ports, 1 USB 2.0 port
POWER CONSUMPTION:	120W power adapter (19V, 6.32A)
OPERATING TEMPERATURE:	0° to +40°C (32° to 104°F)
STORAGE TEMPERATURE:	-40° to +70°C (-40° to 158°F)
HUMIDITY:	10% to 90%, RHL non-condensing
DIMENSIONS:	11.7" x 2.2" x 8.3" W, D, H
WEIGHT:	2.3kg (5.0lbs)
INCLUDED ACCESSORIES:	3 power cords (US, EU, UK)
OPTIONAL:	2U rack adapter
Specifications are subject to change without notice at http://www.kramerelectronics.com	

6 VIA Collage Upgrade Procedure

This section describes the procedure for upgrading the **VIA Collage** firmware.

6.1 Downloading the Upgrade File

1. Go to http://www.kramerelectronics.com/support/product_downloads.asp to check for the latest available firmware upgrades.
2. Select the type of unit to upgrade.
3. Save the downloaded file to your computer and extract all files.

6.2 Upgrading your VIA Collage

Refer to "VIA Collage upgrade procedure" included in the downloaded folder.

6.3 Verifying a Correct Installation

From your **VIA Collage** unit, click the Participants icon and check that the correct software version appears on the right side of the screen.

Check on Kramer Web site for the latest Firmware version

6.4 Updating your Computer Client Applications (Windows and MAC)

To download the new client application:

- Connect to the same Wi-Fi network and browse the IP address of the unit
- The system automatically detects if the user is connected from a Windows PC or a Mac and directs him to download Virtual Run or to install the application accordingly
- Once the user has installed the new client App, the version appearing on the top right side of Participants shows the correct version
- This single client application now runs for **VIA Collage**, **VIA Campus** and **VIA Connect PRO** units

6.5 Updating the Mobile Applications

It is essential that all users download the new client application from the VIA unit.

It is important to update your mobile units as soon as the mobile apps are available in accordance with the firmware upgrade of the VIA, otherwise your mobile devices cannot work with the VIA.

LIMITED WARRANTY

The warranty obligations of Kramer Electronics for this product are limited to the terms set forth below:

What is Covered

This limited warranty covers defects in materials and workmanship in this product.

What is Not Covered

This limited warranty does not cover any damage, deterioration or malfunction resulting from any alteration, modification, improper or unreasonable use or maintenance, misuse, abuse, accident, neglect, exposure to excess moisture, fire, improper packing and shipping (such claims must be presented to the carrier), lightning, power surges, or other acts of nature. This limited warranty does not cover any damage, deterioration or malfunction resulting from the installation or removal of this product from any installation, any unauthorized tampering with this product, any repairs attempted by any unauthorized by Kramer Electronics to make such repairs, or any other cause which does not relate directly to a defect in materials and/or workmanship of this product. This limited warranty does not cover cartons, equipment enclosures, cables or accessories used in conjunction with this product.

Without limiting any other exclusion herein, Kramer Electronics does not warrant that the product covered hereby, including, without limitation, the technology and/or integrated circuit(s) included in the product, will not become obsolete or that such items are or will remain compatible with any other product or technology with which the product may be used.

How Long Does this Coverage Last

As of this printing, three years for hardware and one year for software updates. Please check our Web site for the most current and accurate warranty information.

Who is Covered

Only the original purchaser of this product is covered under this limited warranty. This limited warranty is not transferable to subsequent purchasers or owners of this product.

What Kramer Electronics will do

Kramer Electronics will, at its sole option, provide one of the following three remedies to whatever extent it shall deem necessary to satisfy a proper claim under this limited warranty:

1. Elect to repair or facilitate the repair of any defective parts within a reasonable period of time, free of any charge for the necessary parts and labor to complete the repair and restore this product to its proper operating condition. Kramer Electronics will also pay the shipping costs necessary to return this product once the repair is complete.
2. Replace this product with a direct replacement or with a similar product deemed by Kramer Electronics to perform substantially the same function as the original product.
3. Issue a refund of the original purchase price less depreciation to be determined based on the age of the product at the time remedy is sought under this limited warranty.

What Kramer Electronics will not do Under This Limited Warranty

If this product is returned to Kramer Electronics or the authorized dealer from which it was purchased or any other party authorized to repair Kramer Electronics products, this product must be insured during shipment, with the insurance and shipping charges prepaid by you. If this product is returned uninsured, you assume all risks of loss or damage during shipment. Kramer Electronics will not be responsible for any costs related to the removal or re-installation of this product from or into any installation. Kramer Electronics will not be responsible for any costs related to any setting up this product, any adjustment of user controls or any programming required for a specific installation of this product.

How to Obtain a Remedy under this Limited Warranty

To obtain a remedy under this limited warranty, you must contact either the authorized Kramer Electronics reseller from whom you purchased this product or the Kramer Electronics office nearest you. For a list of authorized Kramer Electronics resellers and/or Kramer Electronics authorized service providers, please visit our web site at www.kramerelectronics.com or contact the Kramer Electronics office nearest you.

In order to pursue any remedy under this limited warranty, you must possess an original, dated receipt as proof of purchase from an authorized Kramer Electronics reseller. If this product is returned under this limited warranty, a return authorization number, obtained from Kramer Electronics, will be required. You may also be directed to an authorized reseller or a person authorized by Kramer Electronics to repair the product.

If it is decided that this product should be returned directly to Kramer Electronics, this product should be properly packed, preferably in the original carton, for shipping. Cartons not bearing a return authorization number will be refused.

Limitation on Liability

THE MAXIMUM LIABILITY OF KRAMER ELECTRONICS UNDER THIS LIMITED WARRANTY SHALL NOT EXCEED THE ACTUAL PURCHASE PRICE PAID FOR THE PRODUCT. TO THE MAXIMUM EXTENT PERMITTED BY LAW, KRAMER ELECTRONICS IS NOT RESPONSIBLE FOR DIRECT, SPECIAL, INCIDENTAL OR CONSEQUENTIAL DAMAGES RESULTING FROM ANY BREACH OF WARRANTY OR CONDITION, OR UNDER ANY OTHER LEGAL THEORY. Some countries, districts or states do not allow the exclusion or limitation of relief, special, incidental, consequential or indirect damages, or the limitation of liability to specified amounts, so the above limitations or exclusions may not apply to you.

Exclusive Remedy

TO THE MAXIMUM EXTENT PERMITTED BY LAW, THIS LIMITED WARRANTY AND THE REMEDIES SET FORTH ABOVE ARE EXCLUSIVE AND IN LIEU OF ALL OTHER WARRANTIES, REMEDIES AND CONDITIONS, WHETHER ORAL OR WRITTEN, EXPRESS OR IMPLIED. TO THE MAXIMUM EXTENT PERMITTED BY LAW, KRAMER ELECTRONICS SPECIFICALLY DISCLAIMS ANY AND ALL IMPLIED WARRANTIES, INCLUDING, WITHOUT LIMITATION, WARRANTIES OF MERCHANTABILITY AND FITNESS FOR A PARTICULAR PURPOSE. IF KRAMER ELECTRONICS CANNOT LAWFULLY DISCLAIM OR EXCLUDE IMPLIED WARRANTIES UNDER APPLICABLE LAW, THEN ALL IMPLIED WARRANTIES COVERING THIS PRODUCT, INCLUDING WARRANTIES OF MERCHANTABILITY AND FITNESS FOR A PARTICULAR PURPOSE, SHALL APPLY TO THIS PRODUCT AS PROVIDED UNDER APPLICABLE LAW.

IF ANY PRODUCT TO WHICH THIS LIMITED WARRANTY APPLIES IS A "CONSUMER PRODUCT" UNDER THE MAGNUSON-MOSS WARRANTY ACT (15 U.S.C.A. §2301, ET SEQ.) OR OTHER APPLICABLE LAW, THE FOREGOING DISCLAIMER OF IMPLIED WARRANTIES SHALL NOT APPLY TO YOU, AND ALL IMPLIED WARRANTIES ON THIS PRODUCT, INCLUDING WARRANTIES OF MERCHANTABILITY AND FITNESS FOR THE PARTICULAR PURPOSE, SHALL APPLY AS PROVIDED UNDER APPLICABLE LAW.

Other Conditions

This limited warranty gives you specific legal rights, and you may have other rights which vary from country to country or state to state.

This limited warranty is void if (i) the label bearing the serial number of this product has been removed or defaced, (ii) the product is not distributed by Kramer Electronics or (iii) this product is not purchased from an authorized Kramer Electronics reseller. If you are unsure whether a reseller is an authorized Kramer Electronics reseller, please visit our Web site at www.kramerelectronics.com or contact a Kramer Electronics office from the list at the end of this document.

Your rights under this limited warranty are not diminished if you do not complete and return the product registration form or complete and submit the online product registration form. Kramer Electronics thanks you for purchasing a Kramer Electronics product. We hope it will give you years of satisfaction.

KRAMER



P/N: 2900-300475



Rev: 7



SAFETY WARNING

Disconnect the unit from the power supply before opening and servicing

For the latest information on our products and a list of Kramer distributors, visit our Web site to find updates to this user manual.

We welcome your questions, comments, and feedback.

www.kramerAV.com
info@kramerel.com