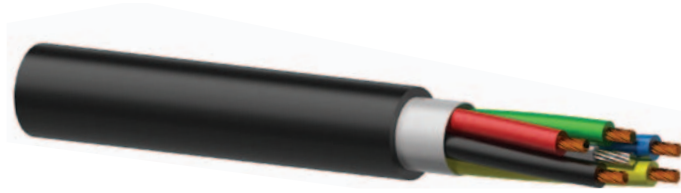


**SPEAKER CABLE WITH STEEL SAFETY CORE
LSS504**



The LSS504 is a high-quality and double isolated loudspeaker cable, suitable for indoor as well as outdoor use.

The cable core section consists of 5 individual isolated conductors with a highly flexible PVC jacketed and a cable section of 0,4 mm². The added steel wire in the centre of the cable makes the LSS504 unique. This makes the LSS504 the perfect solution for hanging loudspeakers in 100V installations. In this way, an external safety cable is no longer needed and the speakers design stays untouched.

The 5 cable cores, each of them in a different color, make it possible to select the power tap settings of the hanging speaker. The cable is available in both white (LSS504/W) and black (LSS504/B), making it as discreet as possible for any situation.



LSS504/W

**BASIC
SERIES**



Speaker Cable

OUTER DIAMETER

Ø 6,5 mm

APPLICATIONS

Indoor use, High-quality installations over long distances

INNER CONDUCTOR



**BARE
COPPER**

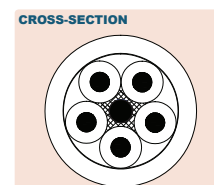
Type of cable	Speaker cable with steel safety core
Inner conductor	BC 23 x 0,15 mm
Inner conductor section	0,40 mm ²
Isolation	PVC Ø 1,8 mm
Isolation colour	Red / Green / Blue / Yellow / Black
Number of conductors	5
Conductor twisting	Yes
Steel core	7 x 0,32 mm
Steel core section	0,56 mm ²
Filling	Cotton yarn
Separator	Cotton paper
Outer jacket	Flexible PVC
Outer jacket colour	Black
Outer jacket dimensions	Ø 6,5 mm
American Wire Gauge	22 AWG

MECHANICAL SPECIFICATIONS

Temperature range	fixed installation	-40° C till +80° C
	flexible installation	-25° C till +70° C
Bending radius	fixed installation	8 x outer diameter
	flexible installation	10 x outer diameter



Available Lengths:
100 m plastic reel



Audio



BULK CABLES

