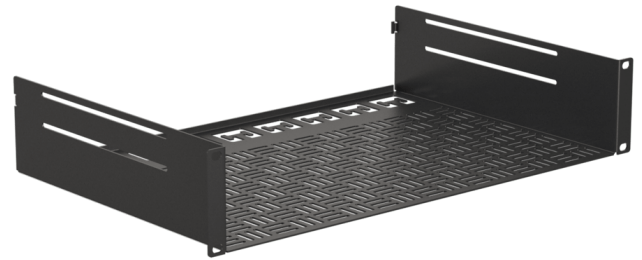


## Highlights:

- Modular & flexible fixation
- Increased usable width
- Increased usable depth of 300 mm
- Improved ventilation with new cutout pattern
- Optional half-width and quarter-width face plates
- Optional back support for improved load capacity
- Integrated cable lacing cutouts



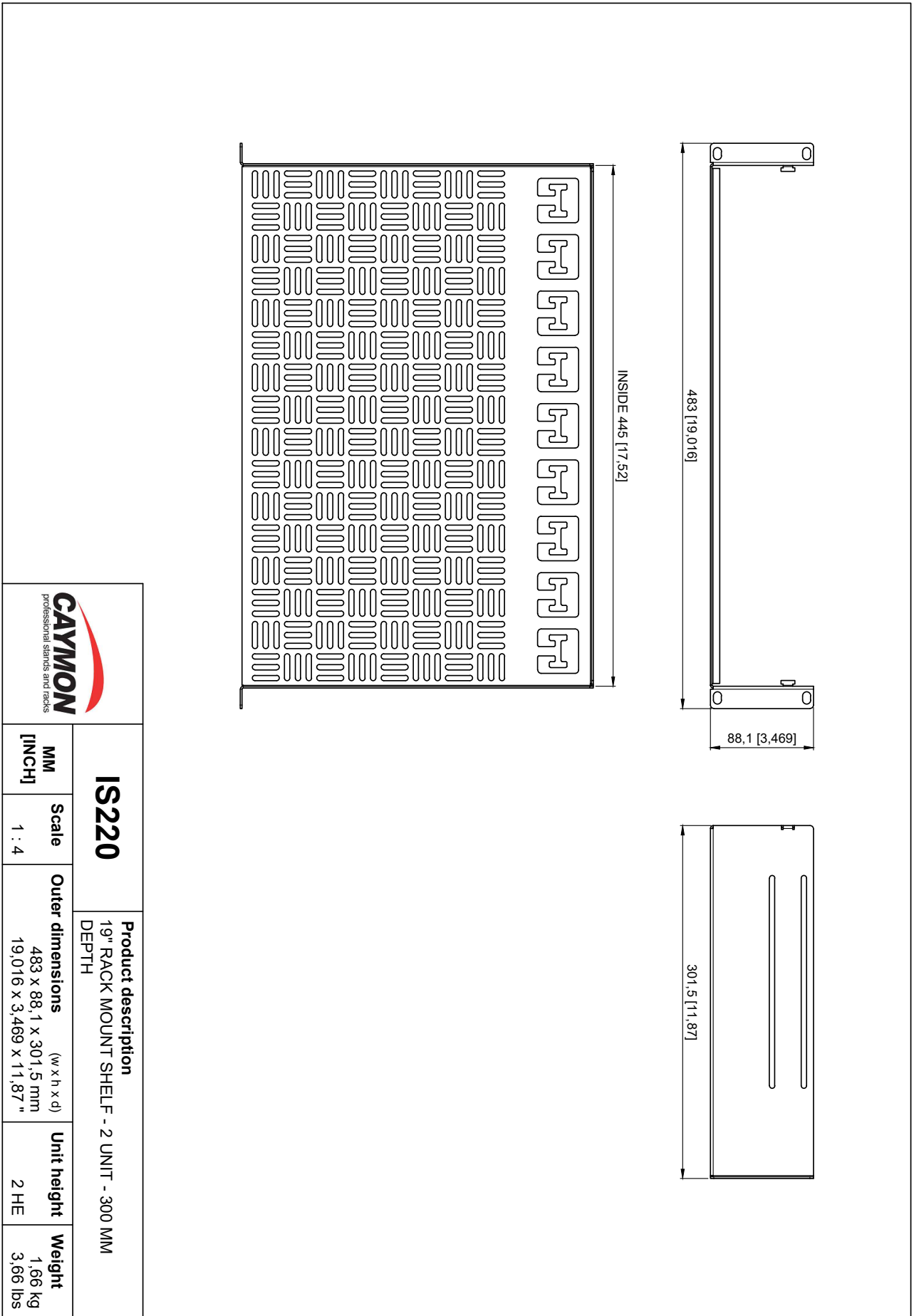
The IS series offers three models catering to 1 unit, 2 units, and 3 units rack mounting, providing you with a solution tailored to your specific requirements. Crafted from cold rolled steel with a robust plate thickness of 1.5 mm, these shelves are designed to meet the demands of modern rack assembly environments.

One of the standout features of the IS Series is its modular and flexible fixation system, allowing easy assembly for devices without standard 19" mounting ears. The enhanced usability extends beyond the conventional, with an increased width and a notable usable depth of 300 mm, providing you with more space to accommodate your equipment. In the 1 unit version a shorter version with a usable depth of 180 mm is also available. Ventilation is a key consideration, and the IS Series addresses this with an improved cutout pattern for enhanced airflow, keeping your devices cool and functioning optimally. The shelves come with an optional half-width and quarter-width face plates, offering a customizable solution to suit your rack configuration needs. For added load capacity and stability, the IS Series offers an optional back support feature. This ensures that your equipment stays securely in place, even in demanding environments.

In the realm of cable management, the integrated cable lacing cutouts streamline the process, helping you maintain a clean and organized setup. The shelves are coated with a black (RAL9004) powder finish, boasting a fine structured finish that not only adds an aesthetic touch but also significantly improves scratch resistance.

## Product Features:

Dimensions	483 x 88.1 x 301.5 mm (W x H x D)
Unit height	2 HE
Max. usable depth	300 mm
Max. load	12.5 kg (without back support) 20 kg (with back support)
Weight	1.66 kg



<b>IS220</b>		<b>Product description</b>		
		19" RACK MOUNT SHELF - 2 UNIT - 300 MM DEPTH		
<b>MM [INCH]</b>	<b>Scale</b>	<b>Outer dimensions</b>	<b>Unit height</b>	<b>Weight</b>
	1 : 4	(w x h x d) 483 X 88,1 X 301,5 mm 19,016 X 3,469 X 11,87"	2 HE	1,66 kg 3,66 lbs