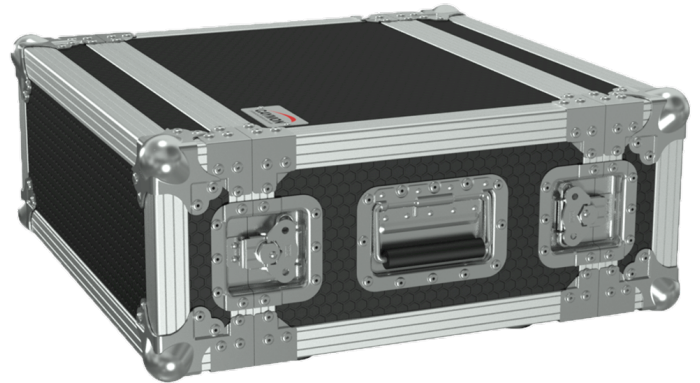


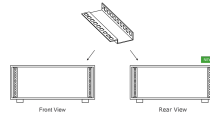
## Highlights:

- Punched square holes for use with snap-in cage nuts
- 335 mm usable depth
- Protects & transports up to 4 units of 19" equipment
- Detachable front & rear cover
- ProShield™ Heavy duty top layer
- High quality 9 mm plywood
- Hardware by Penn Elcom
- Dual perforated rack rail on both sides



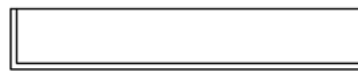
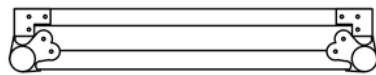
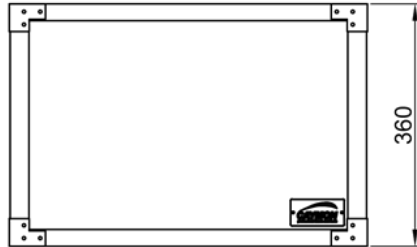
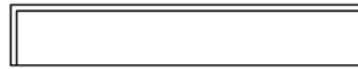
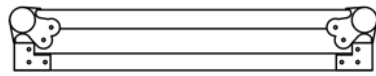
## Product information:

The FCX104MK2 is a 4 unit professional double cover flightcase compliant to the ANSI/EIA RS-310D, DIN41491 and IEC60297 standards for 19" equipment installation. The construction is made out of high quality 9 mm plywood covered by a ProShield™ top layer, offering optimal protection for your equipment. Both front and back lids are detachable, allowing instant access to both controls and connections of your equipment. Mounting of the equipment can be done using the perforated rack rail with punched square holes for use with snap-in cage nuts, provided on both sides of the flightcase. Superior durability and handling convenience is guaranteed through Penn-Elcom® hardware such as heavy-duty ball corners, rivet protected recessed flip handles and MOL™ type butterfly latches.

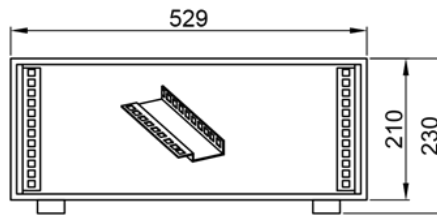
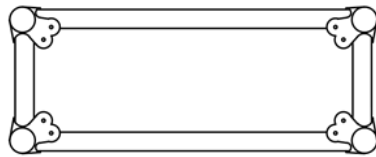


## Product Features:

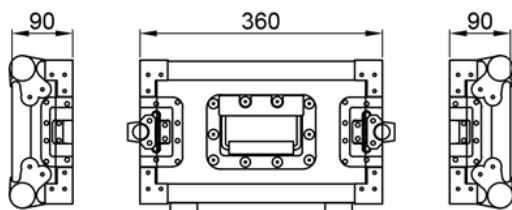
Dimensions	529 x 210 x 540 mm (W x H x D) (excl. rubber feet)
Unit height	4 HE
Weight	12.200 kg
Construction	9 mm high-quality plywood
Finish	ProShield™ top layer
Max. usable depth	335 mm
Tunnel depth	360 mm (excl. covers)
Handles	2 x Medium heavy-duty (H7154Z)
Latches	4 x Medium MOL™ (L907/928/10)



Top View



Front View



Side View

	<b>FCX104MK2</b>		<b>Product description:</b> 19" FLIGHTCASE - 360MM DEPTH - FRONT & REAR 19" MOUNTING PROFILE - 4 UNITS	
	<b>Weight:</b> 12,4 kg		<b>Outer dimensions:</b> (w x h x d) 529 x 230 x 540	<b>Unit height:</b> 4 HE