

### ► Features

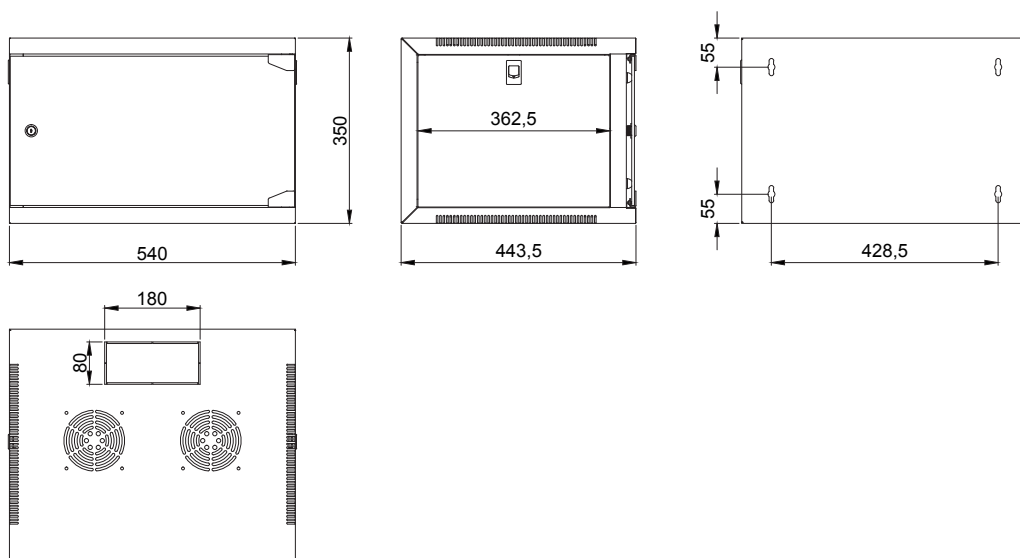
- Stores up to 6 units of 19" equipment
- Loading capacity of 50 Kg
- Integrated ventilation grid on top
- Cable entry on top & bottom (closable)
- Removable sides for easy installing & cabling
- Tempered glass door with wing knob lock
- Front in depth adjustable 19" profiles (max 370 mm)
- Punched square holes for use with snap-in cage nuts



### ► Description

The EPR406 is an economical wall mountable 19" rack compliant to ANSI/EIA RS-310D, DIN41491, IEC 60297 standards. The construction is made of a 1.5 mm thick steel frame with 1.0 mm thick plates and is finished with a black (RAL9004) fine structured powder coating. It stores up to 6 units of 19" equipment, comes fully assembled and can easily be mounted on the wall. The 19" mounting profile with punched square holes for use with snap-in cage nuts in combination with the printed unit measurement indicators ensure easy fitting of the equipment. The tempered glass front door is reversible and secured with a key lock which keeps the equipment accessible for authorized persons only. Other present features are removable sides and in depth adjustable 19" profiles allowing easy and flexible cabling & installation.

### ► Technical Drawing



### ► Specifications

PROPERTY	VALUE
Unit height	6 HE
Max usable depth	370 mm
Max load	50 kg
Width	540 mm
Depth	444 mm
Height	350 mm
Weight	12,5 kg
Rack color	Black (RAL 9004)

### ► Included Accessories

ARTICLE	QUANTITY
Key for front door	2
Cage nuts + screws	24

### ► Optional Accessories

ARTICLE	DESCRIPTION
KM600	Cage nuts
KS600	Screws for cage nuts

## ► Architects' and Engineers' Specifications

---

The rack shall be a 19" type suitable for wall mounted use which complies to ANSI/EIA RS-310D, DIN41491 and IEC60297 standards with 6 usable rackspaces. It shall have the following dimensions: height 350 mm, width 540 mm and depth 444 mm with a weight of 12.5 kg.

The frame of the rack shall be constructed out of cold rolled steel with a thickness of 1.5 mm while other parts shall have a thickness of 1.0 mm. Punched square holes for use with snap-in cage nuts shall be provided for fixation of the equipment. The finishing shall be done in a textured black powder coating (RAL9004) color. The mounting rail shall be adjustable in depth and have printed unit measurement indicators. The rack shall include a tempered glass door which is reversible in position and equipped with a wing knob key lock. The sides of the rack shall be removable and the top shall have a ventilation grid.