

INSTALLATION MANUAL FALSE CEILING TRIM KIT

FALSE CEILING TRIM KIT COMPONENTS INCLUDED IN THE PACKAGING:

- A** pcs. 02 white long L-form pre-punched profiles 50x30x3 (in cm.)



- B** pcs. 04 threaded rods, length 1 mt.



- C** pcs. 02 ceiling mounting brackets



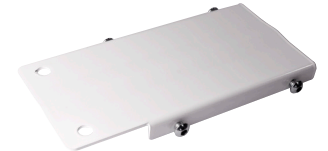
- E** pcs. 02 white side doors



- D** pcs. 03 white U-form supports



- F** pcs. 02 white mounting plates



! WARNING

Before starting to mount the trim kit, you have to cut a rectangular hole in the false ceiling in order to position the screen and the trim kit. Afterwards, you have also to

drill the holes in the concrete ceiling above for fixing the ceiling mounting brackets and the whole trim kit. Depending on the model of trim kit bought,

please follow the instructions, paying attention to the position of the screen's bottom bar in comparison with the false ceiling:

STEP 1

Cut the hole in the false ceiling, following the Fig. 1a. If "L" is the width of the viewing area, proceed according to the chart below:

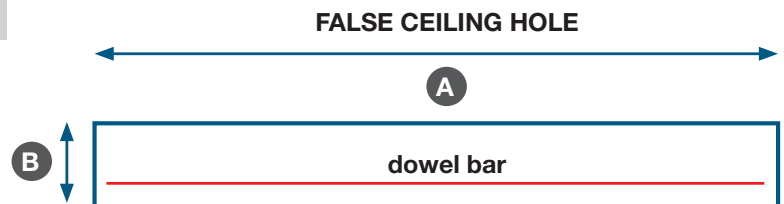


Fig. 1a

MODEL	WIDTH A (CM)	DEPTH B (CM)
FALSE CEILING COMPACT	L+41	13
FALSE CEILING COMPACT+3BB OR H.C.	L+51	13
FALSE CEILING COMPACT TENSIONED	L+70	13
FALSE CEILING ELLIPSE	L+41	14,5
FALSE CEILING ELLIPSE+3BB OR H.C.	L+51	14,5
FALSE CEILING ELLIPSE TENSIONED	L+70	14,5
FALSE CEILING MAJOR	L+43	15,5
FALSE CEILING MAJOR+3BB OR H.C.	L+53	15,5
FALSE CEILING MAJOR TENSIONED	L+72	15,5

STEP 2

Drill the holes following Fig. 2a in order to fix the ceiling brackets (C) to the concrete ceiling, using suitable screws and wall plugs (see also Fig. 6a)

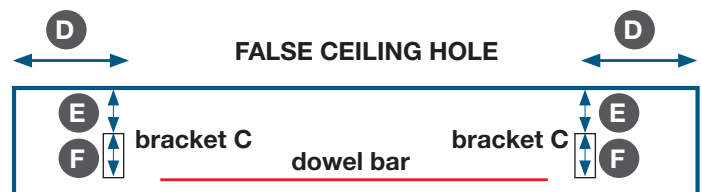


Fig. 2a

MODEL	D (CM)	E (CM)	F (CM)
FALSE CEILING COMPACT	13,5	3,5	6
FALSE CEILING COMPACT+3BB OR H.C.	13,5	3,5	6
FALSE CEILING COMPACT TENSIONED	13,5	3,5	6
FALSE CEILING ELLIPSE	13,5	4,2	6
FALSE CEILING ELLIPSE+3BB OR H.C.	13,5	4,2	6
FALSE CEILING ELLIPSE TENSIONED	13,5	4,2	6
FALSE CEILING MAJOR	13,5	5,7	6
FALSE CEILING MAJOR+3BB OR H.C.	13,5	5,7	6
FALSE CEILING MAJOR TENSIONED	13,5	5,7	6

STEP 3

Once you have drilled the holes correctly, you can proceed assembling the trim kit:

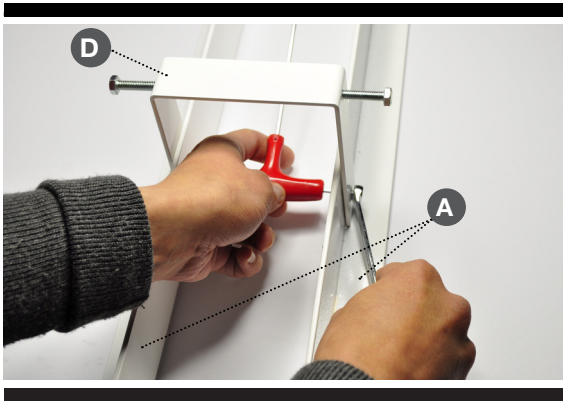


Fig. 3a

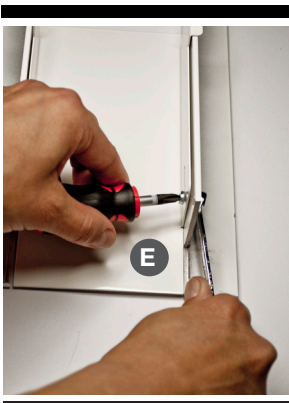


Fig. 3b

Mount the three U-form supports (D) on the two L-form profiles (A) using the provided screws in the pre-punched holes (see Fig. 3a); afterwards mount the two side doors (E) on the two ends left and right of the L-form profiles (see Fig. 3b).

STEP 4



Fig. 4a



Fig. 4b

After having assembled the structure, place it over the screen housing (see Fig. 4a) and then fix the structure to the screen housing, using the six provided screws, through the three U-form supports (see Fig. 4b).

STEP 5



Fig. 5a

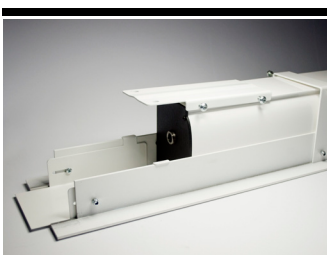


Fig. 5b

Fix the mounting plates (F) tightly to the left and right top sides of the screen housing, paying attention that the plates have to be mounted in the exact position as shown on Fig. 5a and 5b.

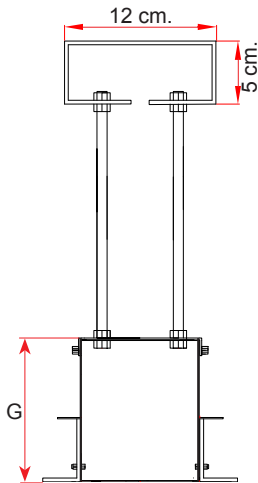
STEP 6



Fig. 6a

Mount the ceiling brackets (C) to the concrete ceiling (see Fig. 6a), using the holes drilled before, according to Fig. 2a.

STEP 7



Cut the threaded rods (B) to the desired length, considering the height of the ceiling bracket (C) of 5 cm. and the height (G) as shown in the chart on the right.

MODEL	G (cm)
FALSE CEILING COMPACT	11,7
FALSE CEILING COMPACT+3BB OR H.C.	11,7
FALSE CEILING COMPACT TENSIONED	11,7
FALSE CEILING ELLIPSE	11,1
FALSE CEILING ELLIPSE+3BB OR H.C.	11,1
FALSE CEILING ELLIPSE TENSIONED	11,1
FALSE CEILING MAJOR	13,7
FALSE CEILING MAJOR+3BB OR H.C.	13,7
FALSE CEILING MAJOR TENSIONED	13,7

STEP 8

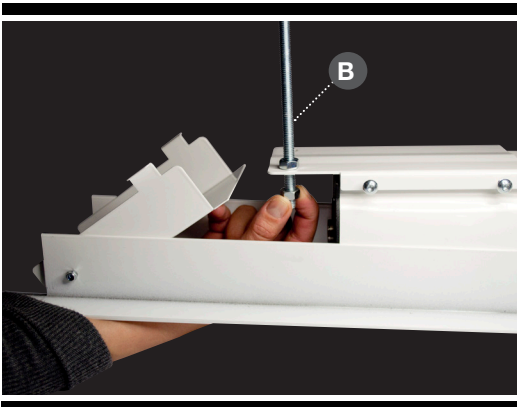


Fig. 8a

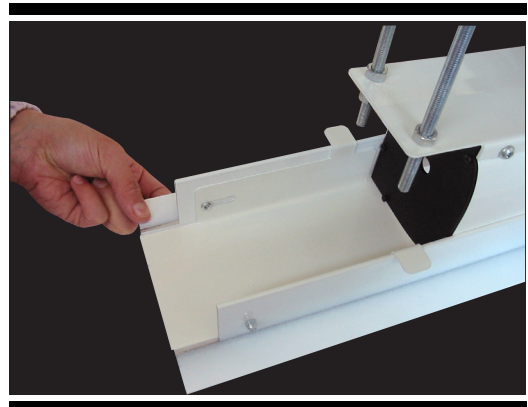


Fig. 8b

Open the side doors of the trim kit, insert the whole structure in the rectangular hole and fix tightly the four threaded rods to the two mounting plates (see Fig. 8a) with the bolts supplied. Once you finish these operations, close the two side doors and align them to the left and right extremes of the L-form profiles (see Fig. 8b).

The installation of your False Ceiling Trim Kit is now completed.