



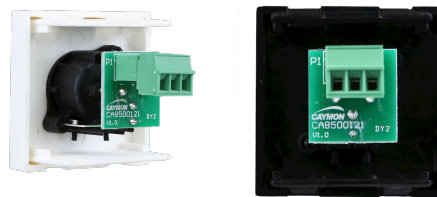
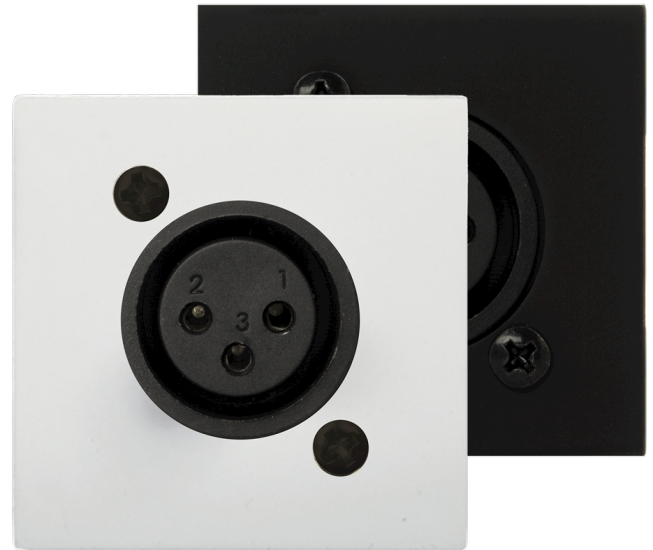
# CP45XLFS

Connection plate XLR female 45 x 45 mm - solderless

Connection plate with D-size 3-pole Female XLR connector, designed to be used with electrical flush mounting boxes for 45 x 45 installation materials. The existing range of CP45 solderless panels are not compatible with WB45 surface mount boxes.

Available in Black (/B) & White (/W).

(Mounting frame and cover plate not included)



## Variants:

- CP45XLFS/B - Black
- CP45XLFS/W - White