

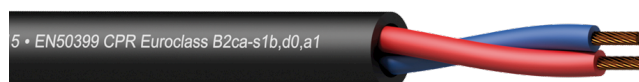
Highlights:

- EN50399 CPR Euroclass B2ca-s1b,d0,a1
- 16 AWG (1.5 mm²) thin and dense stranded conductors
- Class 5 IEC 60228 compliant

The CLS215-B2ca series are 2-core installation loudspeaker cables compliant to the B2ca standards of the Construction Product Regulation (CPR) regarding fire and flammability resistance in fixed installations, minimizing toxic smokes and providing optimal resistance to spreading fire. In addition to its outstanding fire properties, the outer jacket of the cabling is smooth and durable for easy installation and pulling.

The CLS2xx series consists of three models with individually polyolefin isolated conductors in sections ranging from 1.5 mm² (16 AWG) up to 4 mm² (11 AWG) which are composed of stranded bare copper wires. The stranding keeps the cable flexible and easy to handle. The cable can be used in both indoor and outdoor or in humid environments.

More information about CPR compliant cables? [Click here](#)



Certification:



Properties:



Inner Conductors:



Usage:



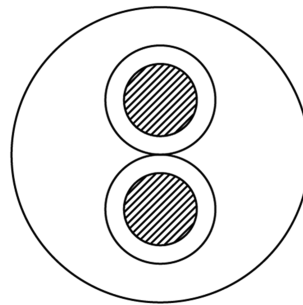
Physical Characteristics:

| | | | |
|-----------------------|--------------------------|---------------------------|-----------------------|
| EN50399 CPR Euroclass | | B2ca-s1b,d0,a1 | |
| Inner conductor | Insulation | Material | Polyolefin 3.1 mm (Ø) |
| | | Colours | Red / Blue |
| Outer jacket | Material | Polyolefin 9 mm (Ø) | |
| | Colours | Black | |
| Type of cable | 2-core loudspeaker cable | | |
| Inner conductor | Material | BC 28 x 0.25 mm (Ø) (OFC) | |
| | Section | 1.5 mm ² | |
| Filling | None | | |
| Separator | None | | |
| Inner conductor | American Wire Gauge | 16 AWG | |
| | Number of conductors | 2 | |
| | Conductor twisting | Yes | |

Electrical Characteristics:

| | | |
|---------------------|--------------------|---------------|
| Max. conductor | DC resistance | 13.3 (Ω / Km) |
| Dielectric strength | 2 (KV / 1 min. DC) | |
| Rated voltage | 500 V | |

Cross sections:



Variants:

- CLS215-B2CA/1 - 100 m plastic reel
- CLS215-B2CA/3 - 300 m plastic reel