



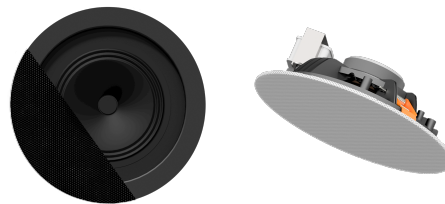
CENA506

SpringFit™ 5" ceiling speaker

Product information:

The unbeatable one. The CENA series are full-range ceiling speakers, designed to offer an unmatched solution for large scale public address projects. The SpringFit™ fixation offers the fastest possible installation time of any speaker available on the market, while the borderless grill design is absolutely unseen for any ceiling speaker in this segment. The selection of high-quality cone materials guarantee an exceptional intelligibility and background music performance.

The CENA506 features a 5" broadband driver with a continuous power handling of 10 Watt (RMS) and maximum power handling of 20 Watt. They are fitted by multi-tapping 100V line transformers with tapings for 6W, 3W.



Voltage:

100V

System specifications:

Max. Power		20 W
RMS Power		10 W
Sound Pressure (Max. W/1m)	@ 100 V	103 dB
Sensitivity (1W/1m)		93 dB
Frequency	Response (± 3 dB)	100 Hz - 15 kHz
Speaker type		Broadband
Line Transformer Tappings	1	6 W / 1667 Ω
	2	3 W / 3333 Ω
Frequency	Range (-10 dB)	80 Hz - 18 kHz
Dispersion	Conical	155°
Connection		Screw terminal
Drivers		5" Full Range

Product Features:

Cut-out measurement	150 mm (\emptyset)
Dimensions	180 x 57 mm (\emptyset x D)
Construction	ABS
Front finish	Borderless finely perforated steel grill
Built-in depth	57 mm
Mounting	Spring-Fit™ mounting system
Colours	White (RAL9003) (CENA506/W)
	Black (RAL9005) (CENA506/B)

Variants:

- CENA506/W - White version
- CENA506/B - Black version