

► Features

- Flexible system for system integration & connectivity
- Compatible with any CASY chassis
- Solderless connections
- 1.5 mm steel construction
- Structured and scratch resistant black powder coating
- Assembly screws included

solderless



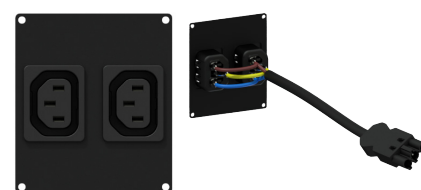
► Modules overview



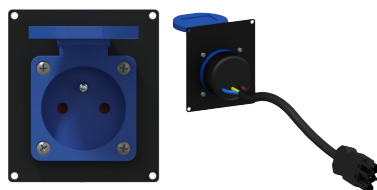
CASY181/B
Euro power male to GST18



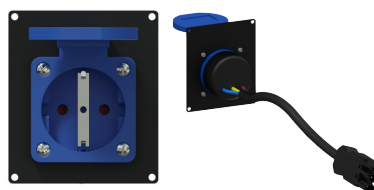
CASY182/B
Euro power female to GST18



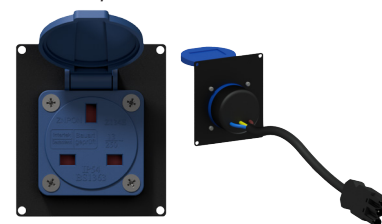
CASY282/B
2 x Euro power female to GST18



CASY285F/B
French socket (IP54) to GST18



CASY285G/B
German socket (IP54) to GST18



CASY285UK/B
UK socket (IP54) to GST18

► Specifications

ARTICLE	CONNECTION / CUTOUT	MODULE SPACE	CONNECTION TYPE	DIMENSIONS	WEIGHT
CASY181/B	Euro power male	1 Space	IEC C14 to GST18 female	35,5 x 82,1 mm	0.067 Kg
CASY182/B	Euro power female	1 Space	IEC C13 to GST18 male	35,5 x 82,1 mm	0.066 Kg
CASY282/B	2 x Euro power female	2 Space	2 x IEC C13 to GST18 male	71,5 x 82,1 mm	0.107 Kg
CASY285F/B	French socket (IP54)	2 Space	Female type E to GST18 male	71,5 x 82,1 mm	0.126 Kg
CASY285G/B	German socket (IP54)	2 Space	Female type F (CEE 7/4) to GST18 male	71,5 x 82,1 mm	0.124 Kg
CASY285UK/B	UK socket (IP54)	2 Space	Female UK type (BS 1363) to GST18 male	71,5 x 82,1 mm	0.125 Kg